

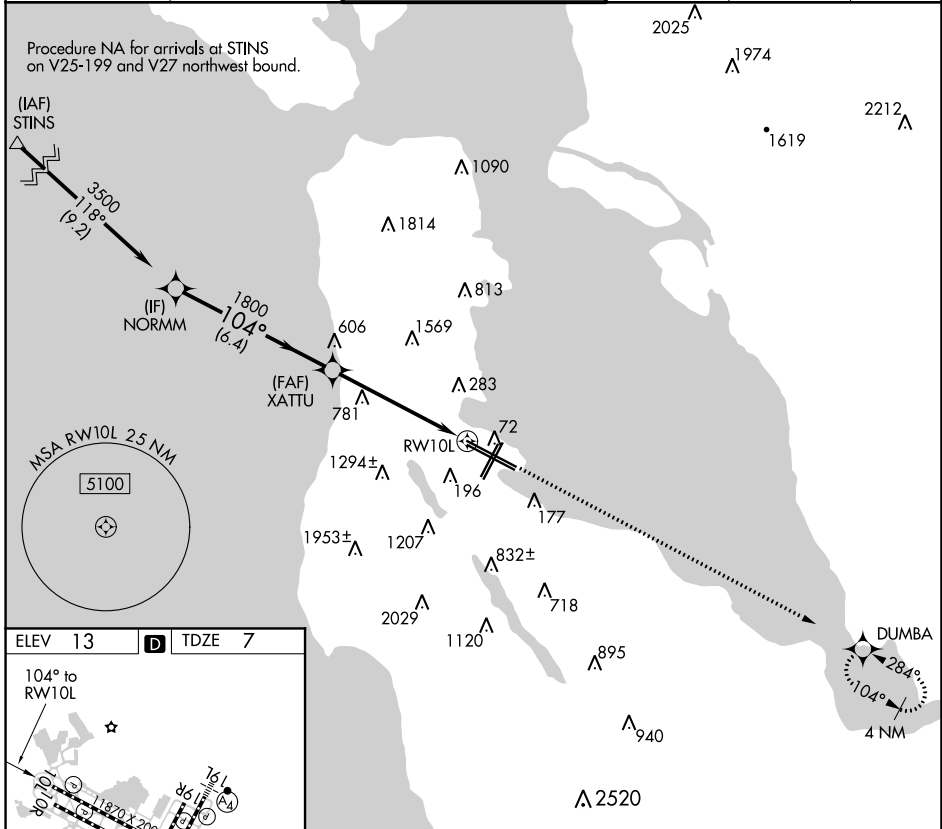
APP CRS 104°	Rwy Idg 11193
	TDZE 7
	Apt Elev 13

RNAV (GPS) RWY 10L

SAN FRANCISCO INTL (SFO)

<p>▽ DME/DME RNP-0.3 NA. ▲ Helicopter visibility reduction below RVR 4000 NA.</p>	MISSED APPROACH: Climb to 4000 direct DUMBA and hold.
---	---

D-ATIS 113.7 115.8 118.85	NORCAL APP CON 134.5 338.2	SAN FRANCISCO TOWER 120.5 269.1	GND CON 121.8	CLNC DEL 118.2	CPDLC
---	--------------------------------------	---	-------------------------	--------------------------	-------



SW-2, 25 MAR 2021 to 22 APR 2021

SW-2, 25 MAR 2021 to 22 APR 2021

