

# QUIET BRIDGE VISUAL RWY 28L/R

SAN FRANCISCO INTL (SFO)  
SAN FRANCISCO, CALIFORNIA

D-ATIS

113.7 115.8 118.85

NORCAL APP CON

134.5 338.2

SAN FRANCISCO TOWER

120.5 269.1

GND CON

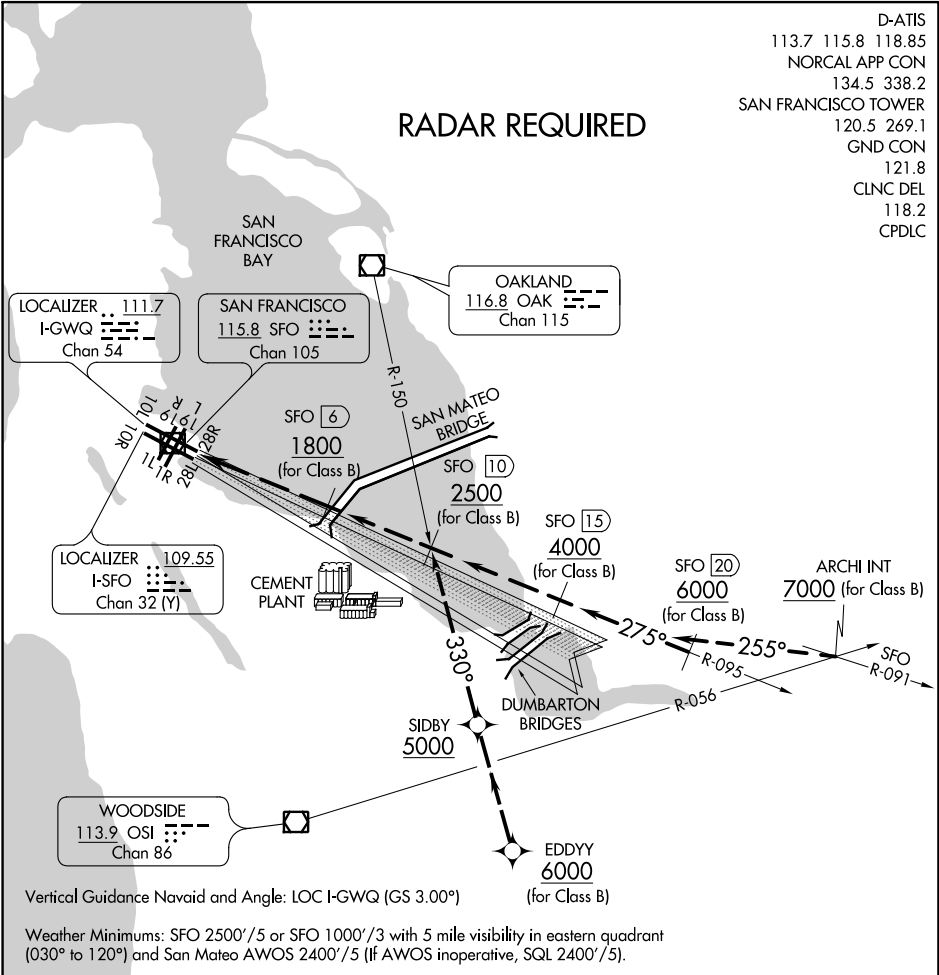
121.8

CLNC DEL

118.2

CPDLC

## RADAR REQUIRED



SW-2, 25 MAR 2021 to 22 APR 2021

SW-2, 25 MAR 2021 to 22 APR 2021

1	2	3	4	5	6	7	8	9	10	11	12	13	14	15	16	17	18	19	20	21	22	23	24	25	26	27	28	29	30	31	32
---	---	---	---	---	---	---	---	---	----	----	----	----	----	----	----	----	----	----	----	----	----	----	----	----	----	----	----	----	----	----	----

## QUIET BRIDGE VISUAL APPROACH RUNWAY 28L/R

NOTE: Closely spaced parallel visual approaches may be in progress to Runway 28L utilizing I-SFO. In the event of a go-around on Runway 28L, turn left heading 265° or on Runway 28R, heading 280°, climb and maintain 3000 or as directed by ATC.

# QUIET BRIDGE VISUAL RWY 28L/R

SAN FRANCISCO, CALIFORNIA  
SAN FRANCISCO INTL (SFO)