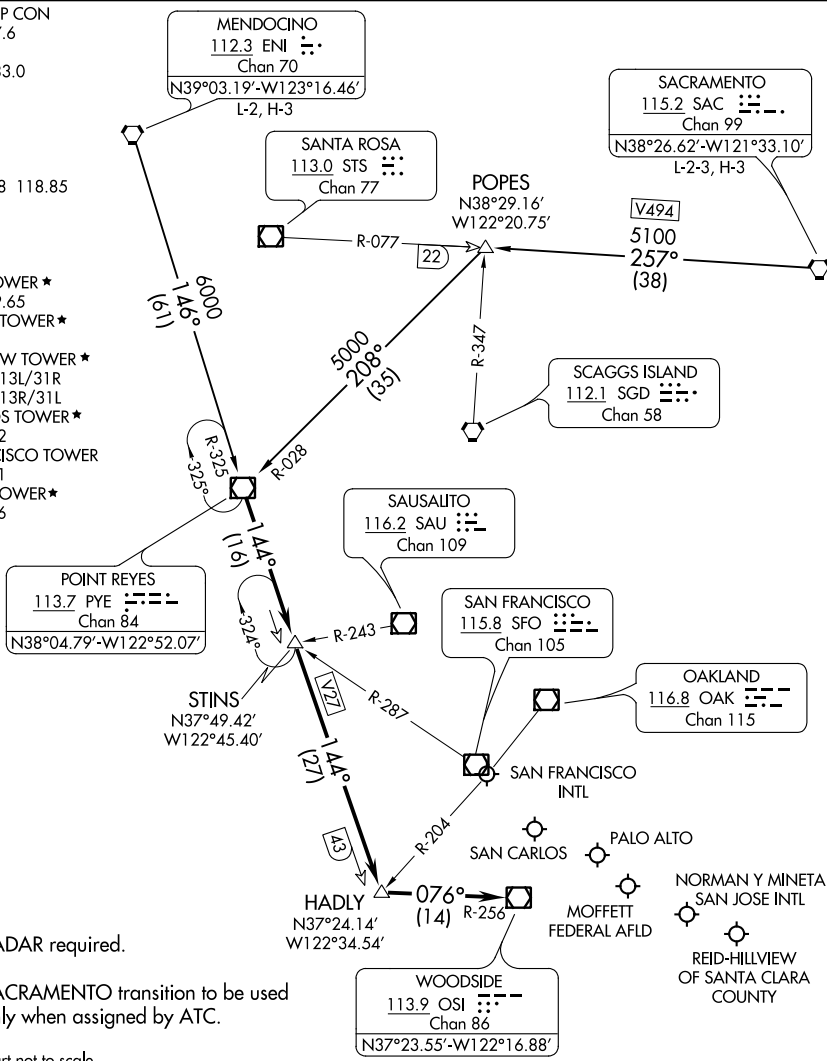


# POINT REYES THREE ARRIVAL

AL-375 (FAA)

SAN FRANCISCO, CALIFORNIA

- NORCAL APP CON  
133.95 317.6
- KNUQ ATIS  
124.175 283.0
- PAO ATIS  
135.275
- RHV ATIS  
125.2
- SFO D-ATIS  
113.7 115.8 118.85
- SJC D-ATIS  
126.95
- SQL ATIS  
125.9
- MOFFETT TOWER \*  
119.50 259.65
- PALO ALTO TOWER \*  
118.6
- REID-HILLVIEW TOWER \*  
119.8 RWY 13L/31R  
126.1 RWY 13R/31L
- SAN CARLOS TOWER \*  
119.0 326.2
- SAN FRANCISCO TOWER  
120.5 269.1
- SAN JOSE TOWER \*  
124.0 257.6



NOTE: RADAR required.

NOTE: SACRAMENTO transition to be used only when assigned by ATC.

NOTE: Chart not to scale.

## ARRIVAL ROUTE DESCRIPTION

**MENDOCINO TRANSITION (ENI.PYE3):** From over ENI VORTAC on ENI R-146 and PYE R-325 to PYE VOR/DME. Thence. . .

**SACRAMENTO TRANSITION (SAC.PYE3):** From over SAC VORTAC on SAC R-257 and PYE R-028 to PYE VOR/DME. Thence. . .

. . . From over PYE VOR/DME on PYE R-144 to HADLY, then on OSI R-256 to OSI VOR/DME. Expect RADAR vectors to final approach course.

# POINT REYES THREE ARRIVAL

(PYE.PYE3) 22JUN17

SAN FRANCISCO, CALIFORNIA

SW-2, 25 MAR 2021 to 22 APR 2021

SW-2, 25 MAR 2021 to 22 APR 2021