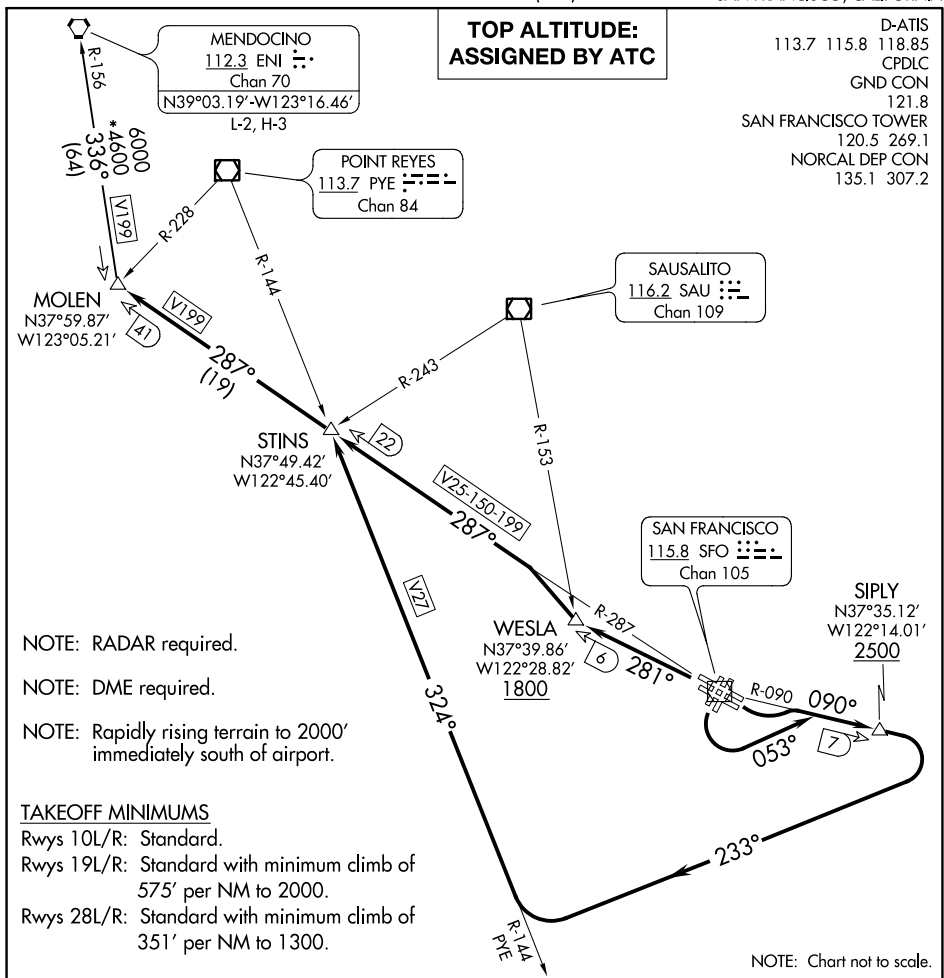


(MOLEN8.MOLEN) 17341

# MOLEN EIGHT DEPARTURE

AL-375 (FAA)

SAN FRANCISCO INTL (SFO)  
SAN FRANCISCO, CALIFORNIA



SW-2, 25 MAR 2021 to 22 APR 2021

SW-2, 25 MAR 2021 to 22 APR 2021

**DEPARTURE ROUTE DESCRIPTION**

**TAKEOFF RUNWAYS 10L/R:** Climbing left turn to intercept SFO R-090 to cross SIPLY 7 DME FIX at or above 2500, then climbing right turn to 5000 on heading 233° to intercept and proceed on PYE R-144 to STINS INT/SFO 22 DME, then on SFO VOR/DME R-287 to MOLEN INT/SFO 41 DME. Thence . . .

**TAKEOFF RUNWAYS 19L/R:** Climbing left turn to heading 053° to intercept SFO R-090 to cross SIPLY 7 DME FIX at or above 2500, then climbing right turn to 5000 heading 233° to intercept and proceed on PYE R-144 to STINS INT/SFO VOR/DME 22 DME, then on SFO VOR/DME R-287 to MOLEN INT/SFO 41 DME. Thence . . .

**TAKEOFF RUNWAYS 28 L/R:** Climb on SFO VOR/DME R-281 to cross WESLA INT/SFO VOR/DME 6 DME at or above 1800 then turn right to intercept SFO R-287 to MOLEN INT/SFO 41 DME. Thence . . .  
. . . (transition). Expect clearance to filed altitude 10 minutes after departure.

**MENDOCINO TRANSITION (MOLEN8.ENI):** From over MOLEN INT on ENI R-156 to ENI VORTAC.

# MOLEN EIGHT DEPARTURE

(MOLEN8.MOLEN) 15SEP16

SAN FRANCISCO, CALIFORNIA  
SAN FRANCISCO INTL (SFO)