


LOC/DME I-FNFP 110.75 Chan 44(Y)	APP CRS 281°	Rwy Idg TDZE Apt Elev	11236 13 13
---	------------------------	-----------------------------	--

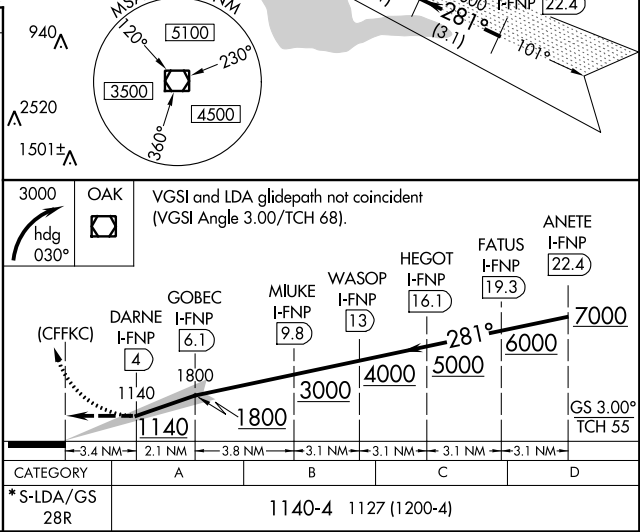
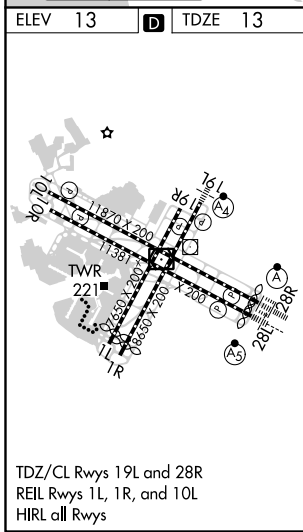
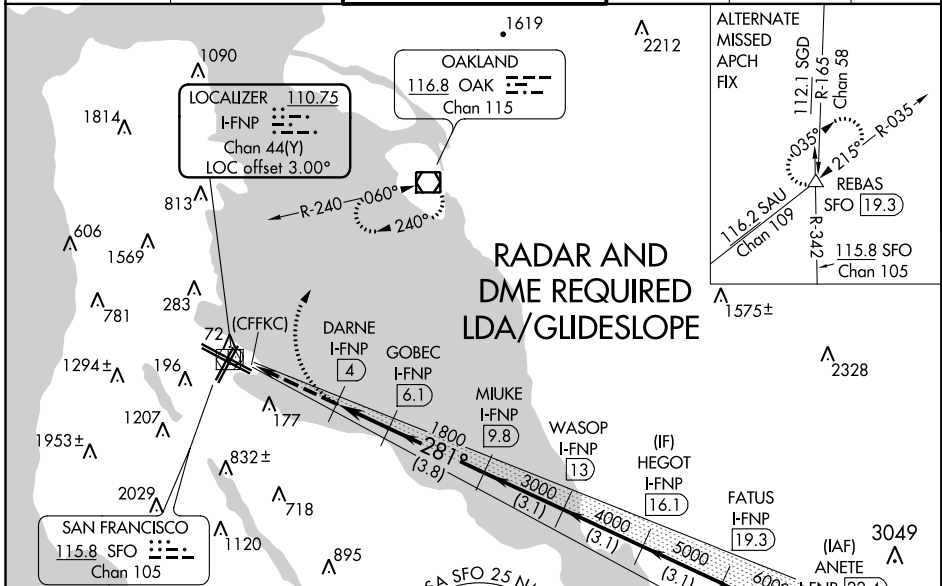
LDA/DME RWY 28R

SAN FRANCISCO INTL (SFO)

NA Inoperative table does not apply. Runway 28L and 28R separated by 750 feet centerline to centerline. Localizer course 1183' right of Rwy 28R threshold. Procedure NA when glideslope not available.
 *If go around executed after passing DARNE, go around requires minimum climb of 380 feet per NM to 1800.

ALSF-2

MISSED APPROACH: Climbing right turn to 3000 on heading 030° then direct OAK VOR/DME and hold.

D-ATIS 113.7 115.8 118.85	NORCAL APP CON 134.5 338.2	SAN FRANCISCO TOWER 120.5 269.1	GND CON 121.8	CLNC DEL 118.2	CPDLC
---	--------------------------------------	---	-------------------------	--------------------------	-------



SW-2, 25 MAR 2021 to 22 APR 2021

SW-2, 25 MAR 2021 to 22 APR 2021