

| | | | |
|---|------------------------|-----------------------------|--|
| LOC/DME I-SFO 109.55 Chan 32 (Y) | APP CRS 284° | Rwy Idg TDZE Apt Elev | 10275 13 13 |
|---|------------------------|-----------------------------|--|

ILS or LOC RWY 28L

SAN FRANCISCO INTL (SFO)

RNAV 1- GPS or RADAR required for procedure entry. DME required.

MAJORS

⚠ Circling NA to Rwy's 10L, 10R, 19L, and 19R. Circling Rwy 1L, 1R NA at night. LOC procedure NA during simultaneous operations. Simultaneous approach authorized. Simultaneous operations require use of vertical guidance; maintain last assigned altitude until established on glideslope.

RVR 1800 authorized with use of FD or AP or HUD to DA.

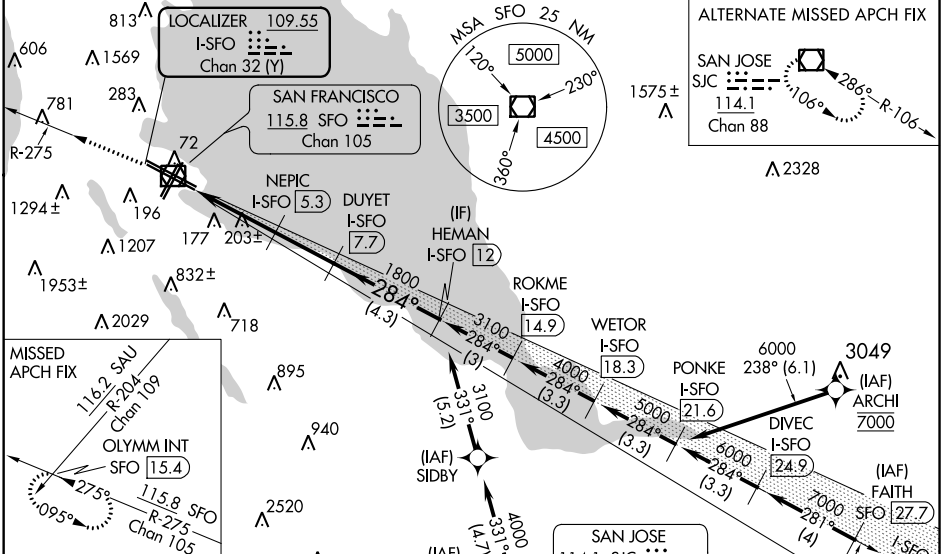
For inop ALS, increase S-ILS 28L all Cats visibility to 2 1/2 SM.

****** For inop ALS increase S-LOC 28L Cat C/D visibility to 2 1/2 SM.

MISSED APPROACH: Climb to 4000 on SFO VOR/DME R-275 to OLYMM INT/SFO 15.4 DME and hold, continue climb-in-hold to 4000.

† Missed approach requires minimum climb of 330 feet per NM to 1600.

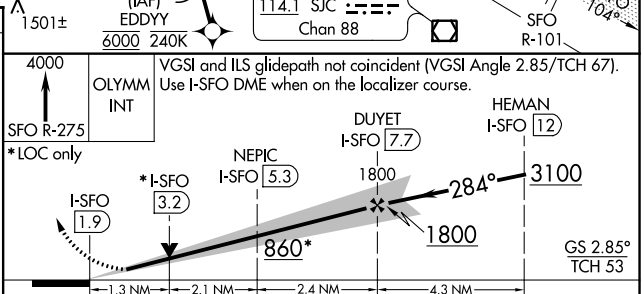
| | | | | | |
|-------------------------------------|--------------------------------------|---|-------------------------|--------------------------|-------|
| D-ATIS 113.7 115.8 118.85 | NORCAL APP CON 134.5 338.2 | SAN FRANCISCO TOWER 120.5 269.1 | GND CON 121.8 | CLNC DEL 118.2 | CPDLC |
|-------------------------------------|--------------------------------------|---|-------------------------|--------------------------|-------|



| | | |
|---------|----------|---------|
| ELEV 13 | D | TDZE 13 |
|---------|----------|---------|

HIRL All Rwy's
TDZ/CL Rwy's 19L and 28R
REIL Rwy's 1L, 1R and 10L

284° 5.7 NM from FAF



| CATEGORY | A | B | C | D |
|-------------------|---------------------------|---|---------------------------|---|
| S-ILS 28L † | 213/24 200 (200-1/2) | | | |
| S-ILS 28L †† | 789-1 3/4 776 (800-1 3/4) | | | |
| S-LOC 28L † | 460/24 447 (500-1/2) | | 460/45 447 (500-7/8) | |
| S-LOC 28L ** | 860/24 847 (900-1/2) | | 860-1 7/8 847 (900-1 7/8) | |
| C CIRCLING | 860-1 1/4 847 (900-1 1/4) | | 1560-3 1547 (1600-3) | |

SW-2, 25 MAR 2021 to 22 APR 2021

SW-2, 25 MAR 2021 to 22 APR 2021