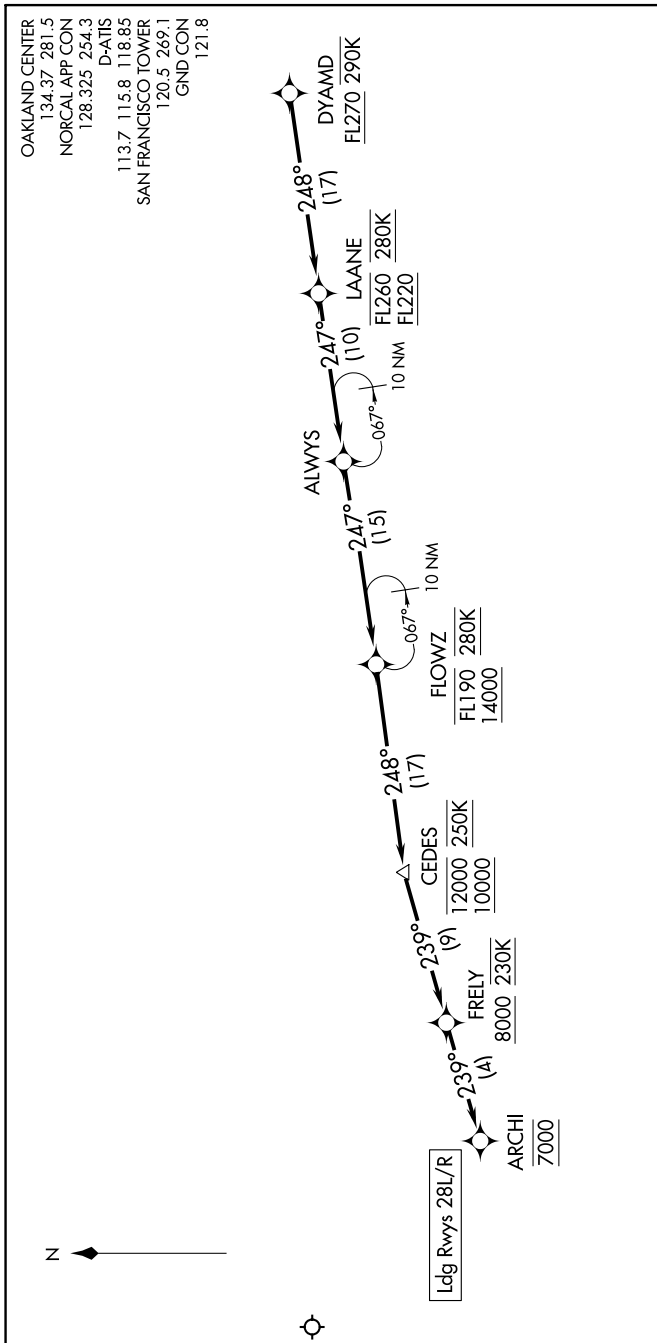


DYAMD FIVE ARRIVAL (RNAV)

Arrival Routes

SAN FRANCISCO, CALIFORNIA

SW-2, 25 MAR 2021 to 22 APR 2021



ARRIVAL ROUTE DESCRIPTION

From DYAMD on track 248° to cross LAANE between FL220 and FL260 and at 280K, then on track 247° to ALWAYS.

LANDING RUNWAYS 28L/R: From ALWAYS on track 247° to cross FLOWZ between 14000 and FL190 and at 280K, then on track 248° to cross CEDES between 10000 and 12000 and at 250K, then on track 239° to cross FRELY at or above 8000 and at 230K, then on track 239° to cross ARCHI at 7000. Expect assigned instrument approach procedure.

NOTE: RNAV 1.
 NOTE: DME/DME/IRU or GPS required.
 NOTE: Expect to receive "descend via" clearance from Oakland Center. Northern California TRACON will assign landing runway.
 NOTE: RADAR required for non-GPS equipped aircraft.

NOTE: Chart not to scale.

SW-2, 25 MAR 2021 to 22 APR 2021

DYAMD FIVE ARRIVAL (RNAV)

Arrival Routes