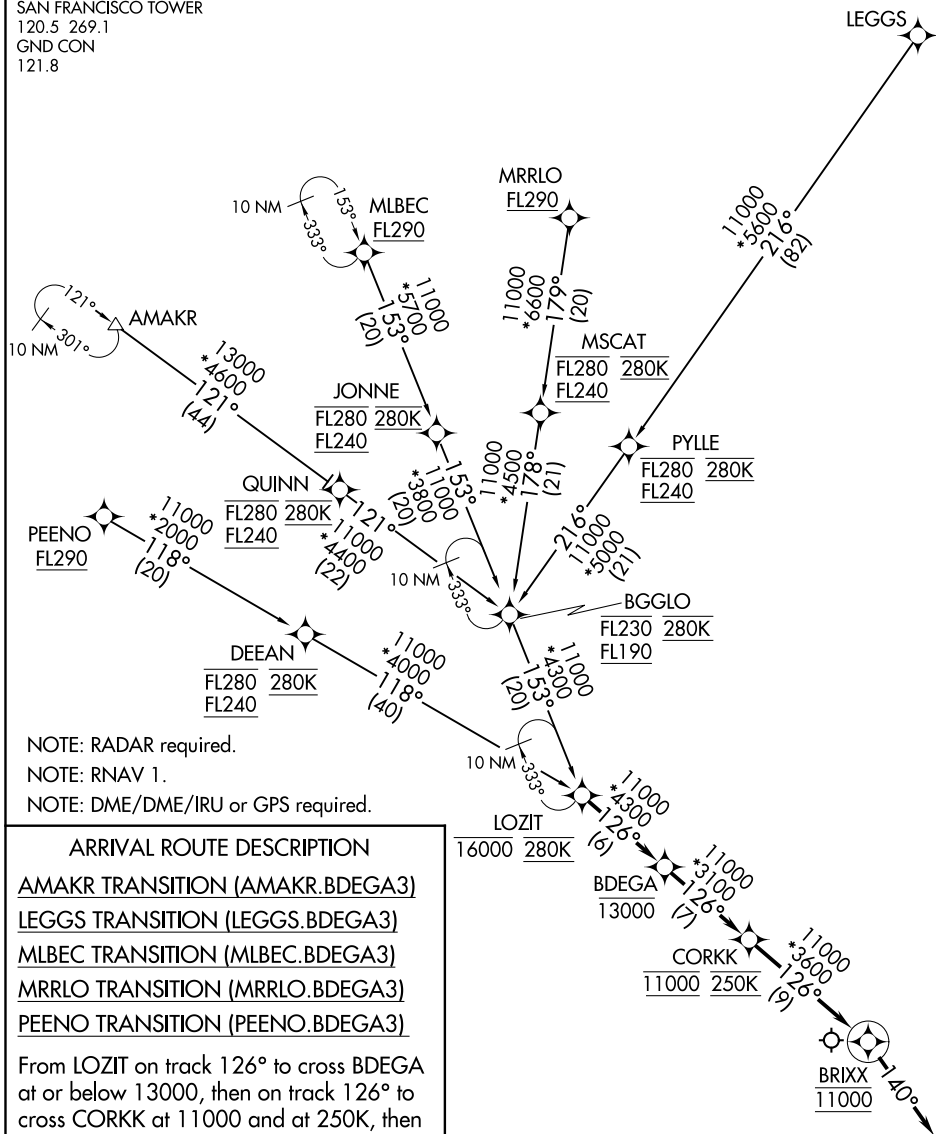


BDEGA THREE ARRIVAL (RNAV)

AL-375 (FAA)



OAKLAND CENTER
125.85 323.0
NORCAL APP CON
133.95 317.6
D-ATIS
113.7 115.8 118.85
SAN FRANCISCO TOWER
120.5 269.1
GND CON
121.8



SW-2, 25 MAR 2021 to 22 APR 2021

SW-2, 25 MAR 2021 to 22 APR 2021

- NOTE: RADAR required.
- NOTE: RNAV 1.
- NOTE: DME/DME/IRU or GPS required.

ARRIVAL ROUTE DESCRIPTION

- AMAKR TRANSITION (AMAKR.BDEGA3)
- LEGGS TRANSITION (LEGGS.BDEGA3)
- MLBEC TRANSITION (MLBEC.BDEGA3)
- MRRLO TRANSITION (MRRLO.BDEGA3)
- PEENO TRANSITION (PEENO.BDEGA3)

From LOZIT on track 126° to cross BDEGA at or below 13000, then on track 126° to cross CORKK at 11000 and at 250K, then on track 126° to BRIXX, then on track 140°.
Expect RADAR vectors to final approach course.

NOTE: Chart not to scale.

BDEGA THREE ARRIVAL (RNAV)