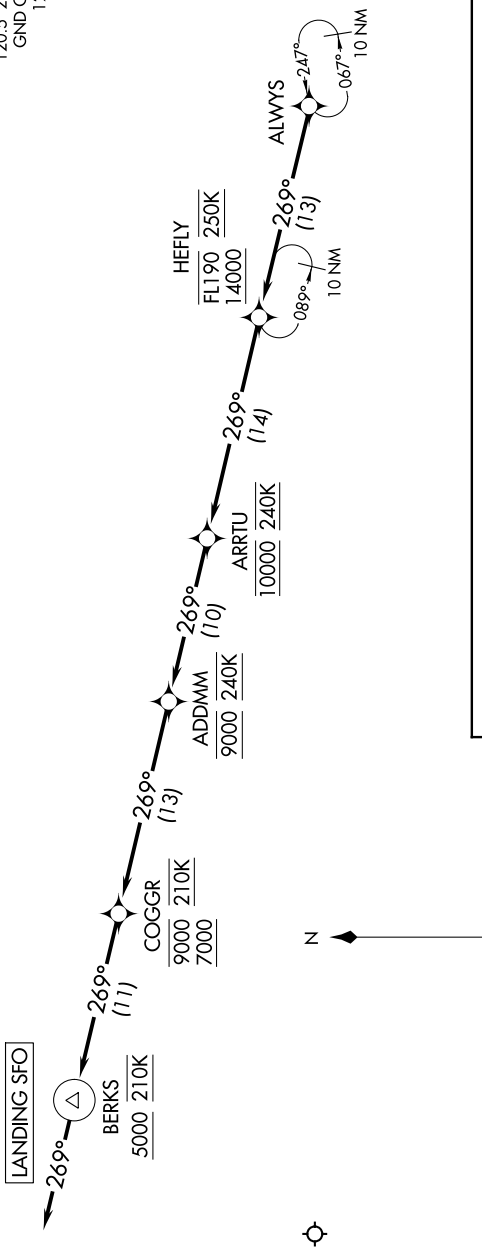


ALWYS TWO ARRIVAL (RNAV) Arrival Routes

OAKLAND CENTER
134.37 281.5
NORCAL APP CON
128.325 254.3
D-ATIS
113.7 115.8 118.85
SAN FRANCISCO TOWER
120.5 269.1
GND CON
121.8



ARRIVAL ROUTE DESCRIPTION

LANDING RUNWAYS 19L/R: From ALWAYS on track 269° to cross HEFLY between 14000 and FL190 and at 250K, then on track 269° to cross HEFLY at 10000 and at 240K, then on track 269° to cross ADDMM at 9000 and at 240K, then on track 269° to cross COGGR between 7000 and 9000 and at 210K, then on track 269° to cross BERKS at or above 5000 and at 210K, then on track 269°. Expect ILS or RNAV (GPS) approach to Rwy 19L or RADAR vectors to final approach course.

NOTE: RADAR required.

NOTE: RNAV 1.

NOTE: DME/DME/IRU or GPS required.

NOTE: Expect "descend via" clearance from Oakland Center. Northern California TRACON will assign landing runway.

NOTE: Chart not to scale.