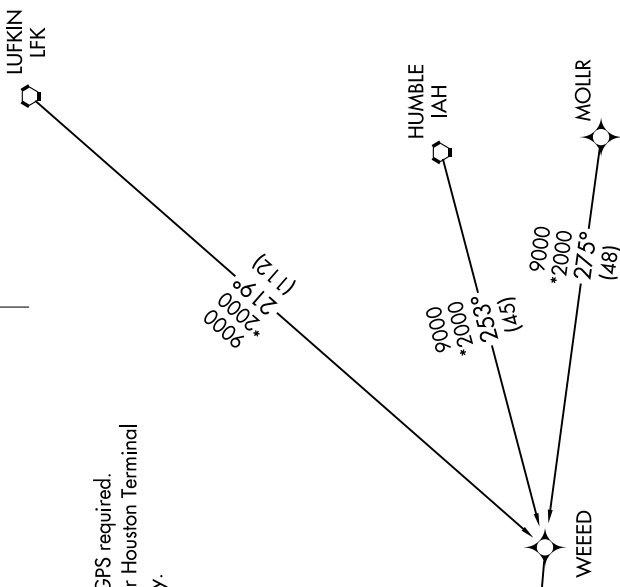


BRAUN THREE ARRIVAL (RNAV) Transition Routes

SAN ANTONIO, TEXAS

SAN ANTONIO APP CON
127.1 269.1
KRND ATIS *
290.525
SAT D-ATIS
118.9
SKF ATIS
120.45 273.5
SSF ATIS
128.8

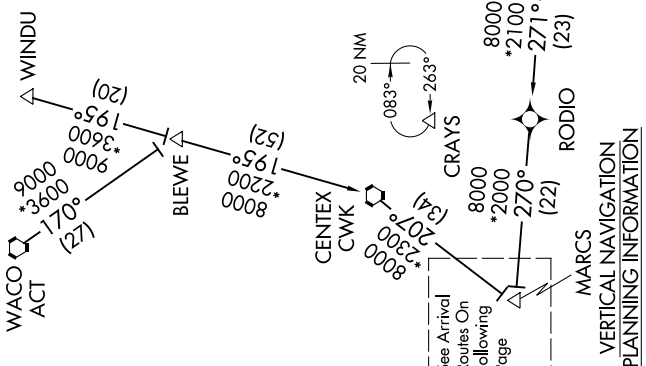


NOTE: RADAR required.
 NOTE: RNAV 1.
 NOTE: DME/DME/IRU or GPS required.
 NOTE: WALLIN transition for Houston Terminal Area Departures only.

NOTE: Chart not to scale

SC-3, 25 MAR 2021 to 22 APR 2021

- HUMBLE TRANSITION (IAH.BRAUN3)
- LUFKIN TRANSITION (LFK.BRAUN3)
- MOLLR TRANSITION (MOLLR.BRAUN3)
- WACO TRANSITION (ACT.BRAUN3)
- WALLIN TRANSITION (WALLIN.BRAUN3)
- WINDU TRANSITION (WINDU.BRAUN3)



(CONTINUED ON FOLLOWING PAGE)

MARCS
 VERTICAL NAVIGATION
 PLANNING INFORMATION

Turbojets: Expect 13000

SC-3, 25 MAR 2021 to 22 APR 2021

BRAUN THREE ARRIVAL (RNAV) Transition Routes

SAN ANTONIO, TEXAS