

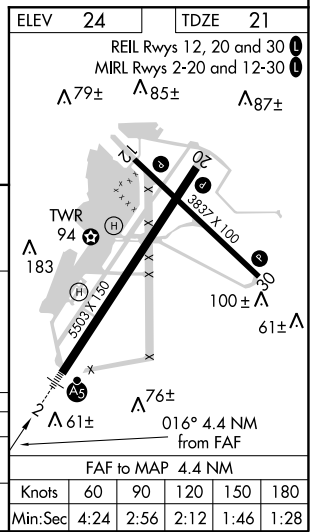
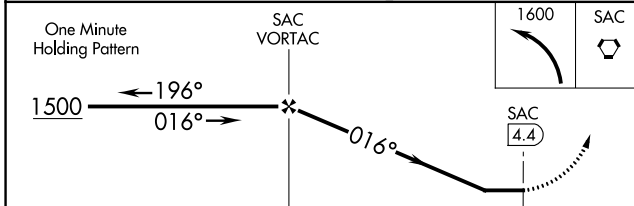
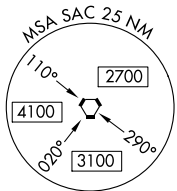
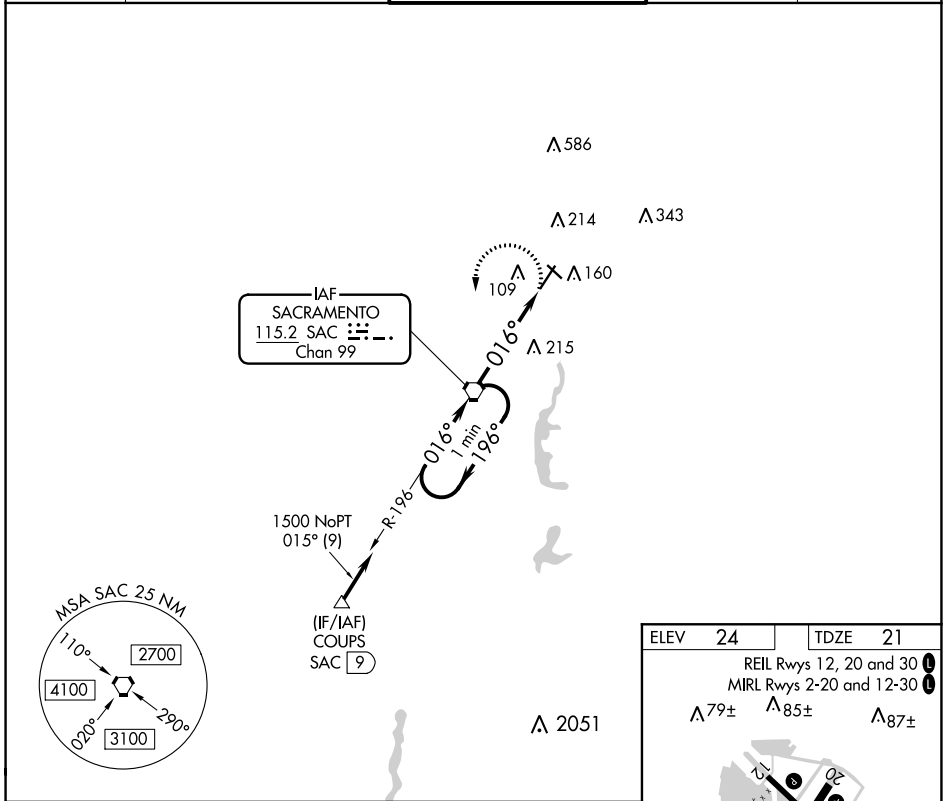
VORTAC SAC 115.2 Chan 99	APP CRS 016°	Rwy Idg 5503 TDZE 21 Apt Elev 24
--	------------------------	---

VOR RWY 2

SACRAMENTO EXECUTIVE (SAC)

<p>When local altimeter setting not received, use Sacramento Inl altimeter setting and increase all MDA 40 feet.</p>	<p>MALS R</p>	<p>MISSED APPROACH: Climbing left turn to 1600 direct SAC VORTAC and hold.</p>		
			<p>ATIS 125.5</p>	<p>NORCAL APP CON 125.25 257.9</p>

ATIS 125.5	NORCAL APP CON 125.25 257.9	EXEC TOWER * 119.5 (CTAF) 0 278.8	GND CON 125.0	UNICOM 122.95
----------------------	---------------------------------------	---	-------------------------	-------------------------



CATEGORY	A	B	C	D
S-2	520-1/2	499 (500-1/2)	520-1	499 (500-1)
CIRCLING	520-1	496 (500-1)	520-1/2	580-2
			496 (500-1/2)	556 (600-2)

SW-2, 25 MAR 2021 to 22 APR 2021

SW-2, 25 MAR 2021 to 22 APR 2021