


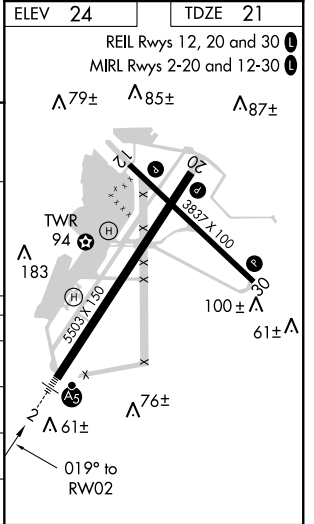
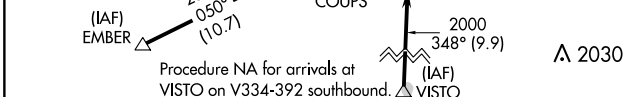
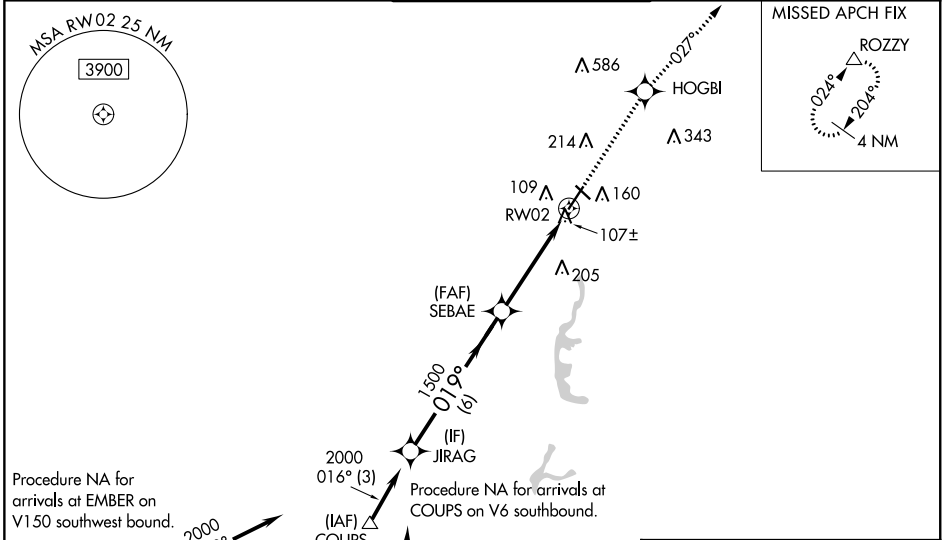
WAAS CH 62810 W02A	APP CRS 019°	Rwy Idg 5503 TDZE 21 Apt Elev 24
--	------------------------	---

RNAV (GPS) RWY 2

SACRAMENTO EXECUTIVE (SAC)

<p>⚠ Baro-VNAV NA when using Sacramento Intl altimeter setting. For uncompensated Baro-VNAV systems, LNAV/VNAV NA below -1.5°C (5°F) or above 54°C (130°F). DME/DME RNP-0.3 NA. When local altimeter setting not received, use Sacramento Intl altimeter setting and increase LPV DA to 322; increase LNAV/VNAV DA to 401 and all visibilities ½ mile; increase all MDA 40 feet and LNAV Cats C/D visibility ½ mile. For inop MALSR, increase LPV all Cats visibility to 1.</p>	<p>MALSR</p>  <p>MISSED APPROACH: Climb to 3000 direct HOGBI and on track 027° to ROZZY and hold.</p>
--	--

ATIS 125.5	NORCAL APP CON 125.25 257.9	EXEC TOWER * 119.5 (CTAF) 278.8	GND CON 125.0	UNICOM 122.95
----------------------	---------------------------------------	---	-------------------------	-------------------------



CATEGORY	A	B	C	D
LPV DA		294-½	273 (300-½)	
LNAV/VNAV DA		373-⅝	352 (400-⅝)	
LNAV MDA	440-½	419 (500-½)	440-¾	419 (500-¾)
CIRCLING	500-1 476 (500-1)	520-1 496 (500-1)	520-1½ 496 (500-1½)	580-2 556 (600-2)

SW-2, 25 MAR 2021 to 22 APR 2021

SW-2, 25 MAR 2021 to 22 APR 2021