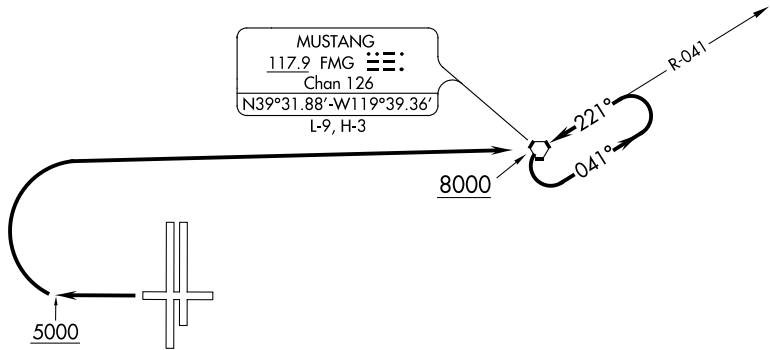


D-ATIS
135.8 363.0
CLNC DEL
124.9 370.85
CPDLC
GND CON
121.9 348.6
RENO TOWER
118.7 257.8
NORCAL DEP CON
126.3 353.9

**TOP ALTITUDE:
10000**



MUSTANG
117.9 FMG
Chan 126
N39°31.88'-W119°39.36'
L-9, H-3

TAKEOFF MINIMUMS

Rwy 7: NA- obstacles

Rwys 16L, 16R, 34L, 34R: NA- ATC.

Rwy 25: Cat A/B, do not exceed 180K until FMG VORTAC, standard with a minimum climb of 380' per NM to 8400, ATC climb of 495' per NM to 8000. Cat C/D: NA- Air traffic control.

NOTE: Chart not to scale.

DEPARTURE ROUTE DESCRIPTION

TAKEOFF RUNWAY 25: Climb to 5000, then climbing right turn to 10000 or assigned altitude direct FMG VORTAC, cross FMG VORTAC at or above 8000. Climb in FMG holding pattern to depart FMG VORTAC at or above MEA/MCA for direction of flight. Expect clearance to requested altitude five minutes after departure.

SW-4, 25 MAR 2021 to 22 APR 2021

SW-4, 25 MAR 2021 to 22 APR 2021