

VORTAC FMG <b>117.9</b> Chan <b>126</b>	APP CRS <b>239°</b>	Rwy Idg TDZE Apt Elev <b>N/A</b> <b>N/A</b> <b>4415</b>
---	------------------------	--

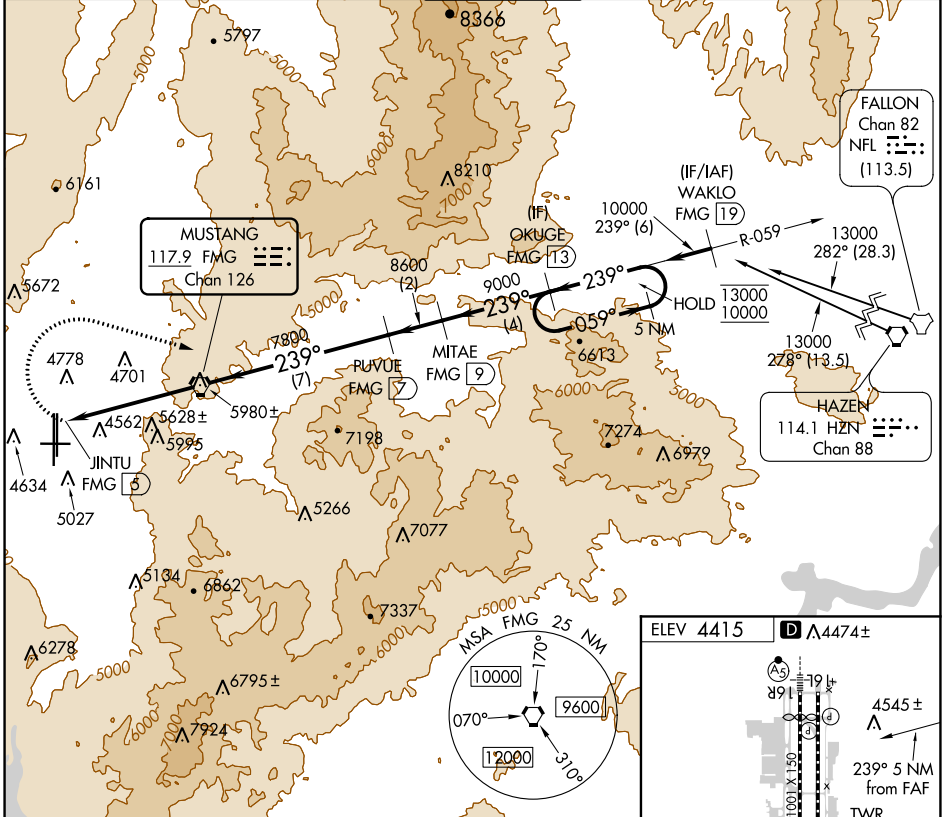
# TACAN-F

RENO/TAHOE INTL (RNO)

**⚠** Circling NA for Cat E south of Rwy 7 and west of 34L.  
**⚠** Circling Rwy 7 NA at night. Approaches RADAR monitored by NORCAL APP CON. Arrivals from east and aircraft on missed approach may be vectored to final.  
**⚠** Circling NA for Cat E to Rwy 7 and 25.  
**⚠** -15°C

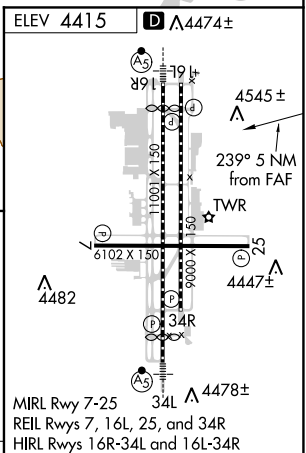
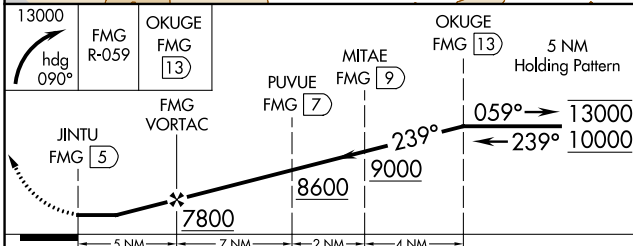
**MISSED APPROACH:** Climbing right turn to 13000 on heading 090° and FMG R-059 to OKUGE/13 DME and hold, continue climb-in-hold to 13000.

D-ATIS <b>135.8 363.0</b>	NORCAL APP CON <b>119.2 279.55 126.3 353.9</b>	RENO TOWER <b>118.7 257.8</b>	GND CON <b>121.9 348.6</b>	CLNC DEL <b>124.9 370.85</b>	CPDLC
------------------------------	---	----------------------------------	-------------------------------	---------------------------------	-------



SW-4, 25 MAR 2021 to 22 APR 2021

SW-4, 25 MAR 2021 to 22 APR 2021



CATEGORY	A	B	C	D	E	FAF to MAP 5 NM						
	<b>Ⓢ</b> CIRCLING	5960-1¼ 1545 (1600-1¼)	5960-1½ 1545 (1600-1½)	6360-3	1945 (2000-3)	6440-3	Knots	60	90	120	150	180
							Min:Sec	5:00	3:20	2:30	2:00	1:40