

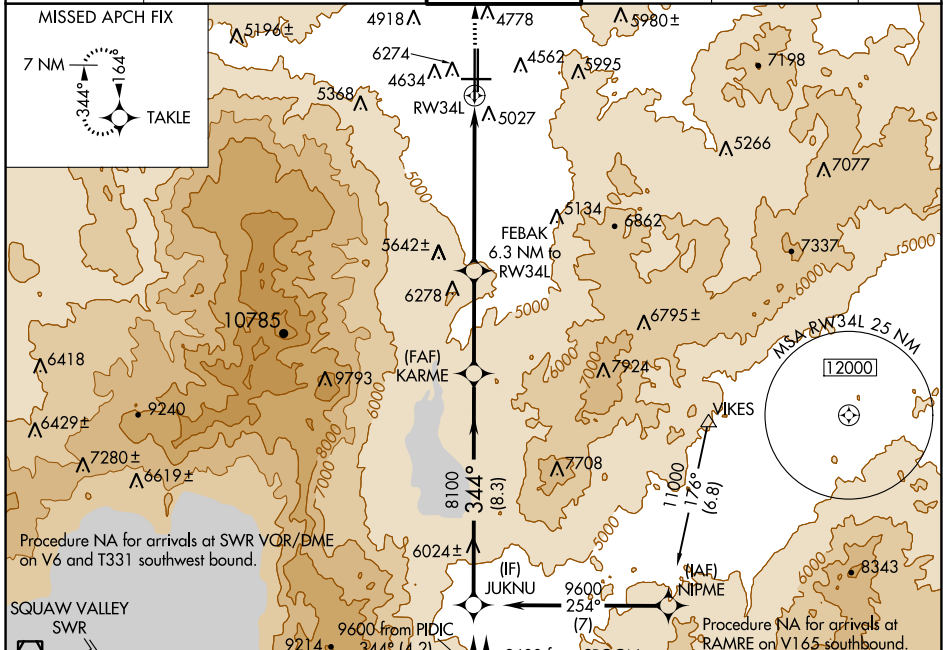
APP CRS 344°	Rwy Idg 10011
	TDZE 4410
	Apt Elev 4415

RNAV (GPS) X RWY 34L

RENO/TAHOE INTL (RNO)

<p>⚠ Circling to Rwy 7 NA at night. DME/DME RNP-0.3 NA. For inoperative MALSRS increase LNAV Cat A and B visibility to 1¼.</p> <p>⚠ -15°C</p>	<p>MALSRS</p>	<p>MISSED APPROACH: Climb to 10000 direct TAKLE and hold, continue climb-in-hold to 10000.</p>
---	---------------	--

D-ATIS 135.8 363.0	NORCAL APP CON 119.2 279.55 126.3 353.9	RENO TOWER 118.7 257.8	GND CON 121.9 348.6	CLNC DEL 124.9 370.85	CPDLC
------------------------------	---	----------------------------------	-------------------------------	---------------------------------	-------

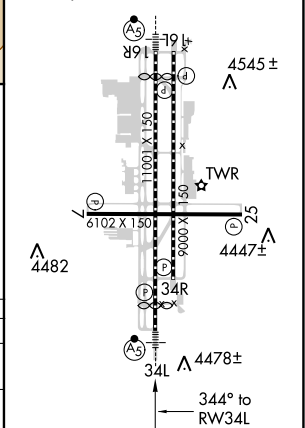
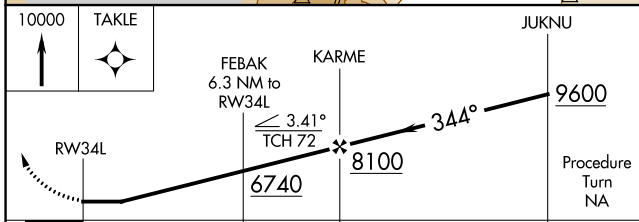


ELEV 4415	D TDZE 4410
HIRL Rwys 16R-34L and 16L-34R	
REIL Rwys 7, 16L, 25, and 34R	
MIRL Rwy 7-25	
4474±	

Procedure NA for arrivals at SWR VOR/DME on V6 and T331 southwest bound.

SQUAW VALLEY SWR

Procedure NA for arrivals at RICHY on V28-113 southwest bound.



CATEGORY	A	B	C	D
LNAV MDA	5300-1 890 (900-1)	5300-2¼ 890 (900-2¼)	5300-2½ 890 (900-2½)	5300-3 925 (1000-3)
CIRCLING	5340-1¼ 925 (1000-1¼)	5340-2¾ 925 (1000-2¾)	5340-3 925 (1000-3)	

SW-4, 25 MAR 2021 to 22 APR 2021

SW-4, 25 MAR 2021 to 22 APR 2021