

(KENNO.RUSME2) 17173

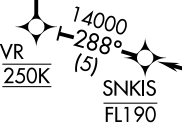
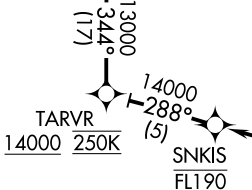
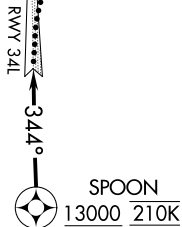
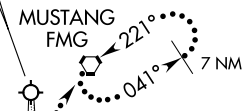
RUSME TWO ARRIVAL (RNAV)

AL-346 (FAA)

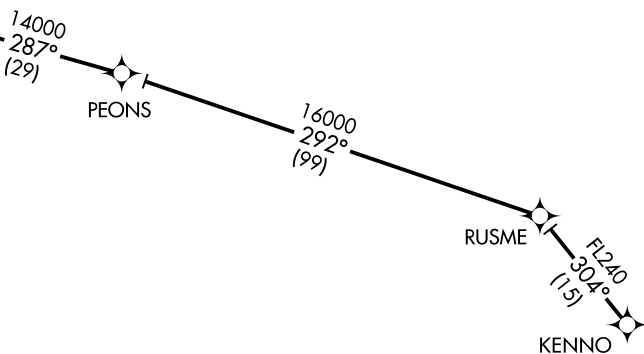
RENO/TAHOE INTL (RNO)
RENO, NEVADA

D-ATIS
135.8 363.0
NORCAL APP CON
120.8 298.9 (Rwys 34 L/R)

LOCALIZER 109.9
I-AGY
Chan 36



- NOTE: RADAR required for non-GPS aircraft.
- NOTE: DME/DME/IRU or GPS required.
- NOTE: RNAV 1.
- NOTE: For Turbojet and Turboprop aircraft only.
- NOTE: For non-GPS equipped aircraft TPH, MVA, OAL, and SWR DMEs must be operational.



NOTE: Chart not to scale.

ARRIVAL ROUTE DESCRIPTION

From KENNO via 304° track to RUSME, then via 292° track to PEONS, then via 287° track to SNKIS, then via 288° track to TARVR, then via 344° track to SPOON.

RWY 34L: Intercept I-AGY localizer. Proceed inbound, expect ILS/Visual approach.
RWY 34R: On heading 344° expect RADAR vectors to final approach course.

LOST COMMUNICATIONS: At SPOON, intercept and execute Rwy 34L ILS approach. If unable, turn right direct to FMG and hold, maintain 12000.

RUSME TWO ARRIVAL (RNAV)

(KENNO.RUSME2) 20OCT11

RENO, NEVADA
RENO/TAHOE INTL (RNO)

SW-4, 25 MAR 2021 to 22 APR 2021

SW-4, 25 MAR 2021 to 22 APR 2021