

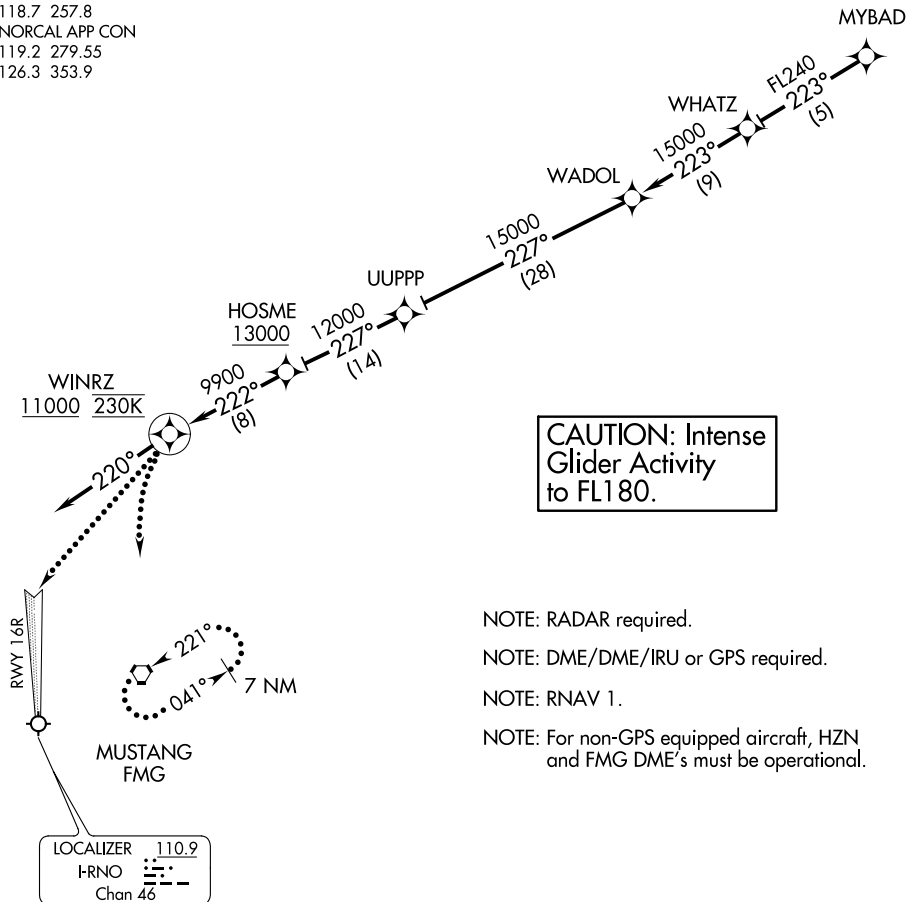
(MYBAD.MYBAD2) 17173

# MYBAD TWO ARRIVAL (RNAV)

AL-346 (FAA)

RENO/TAHOE INTL (RNO)  
RENO, NEVADA

D-ATIS  
135.8 363.0  
RENO TOWER  
118.7 257.8  
NORCAL APP CON  
119.2 279.55  
126.3 353.9



**CAUTION: Intense  
Glider Activity  
to FL180.**

- NOTE: RADAR required.
- NOTE: DME/DME/IRU or GPS required.
- NOTE: RNAV 1.
- NOTE: For non-GPS equipped aircraft, HZN and FMG DME's must be operational.

NOTE: Chart not to scale.

## ARRIVAL ROUTE DESCRIPTION

From MYBAD on track 223° to WHATZ, then as depicted to cross WINRZ at or above 11000 at 230 KTS, then on heading 220°. Rwy 16R/16L expect RADAR vectors to final approach course.

### LOST COMMUNICATIONS

At WINRZ, proceed inbound via RWY 16R ILS approach. If unable, climbing left turn to 12000 direct to FMG VORTAC and hold. Continue climb in hold to 12000.

# MYBAD TWO ARRIVAL (RNAV)

(MYBAD.MYBAD2) 05APR12

RENO, NEVADA  
RENO/TAHOE INTL (RNO)

SW-4, 25 MAR 2021 to 22 APR 2021

SW-4, 25 MAR 2021 to 22 APR 2021