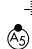


ILS X or LOC X RWY 16R

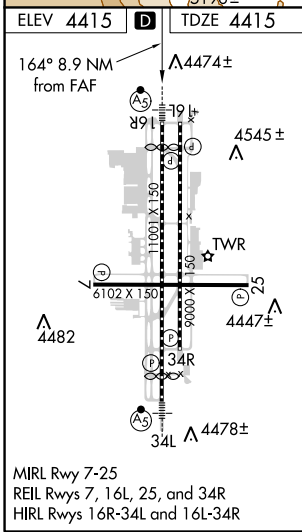
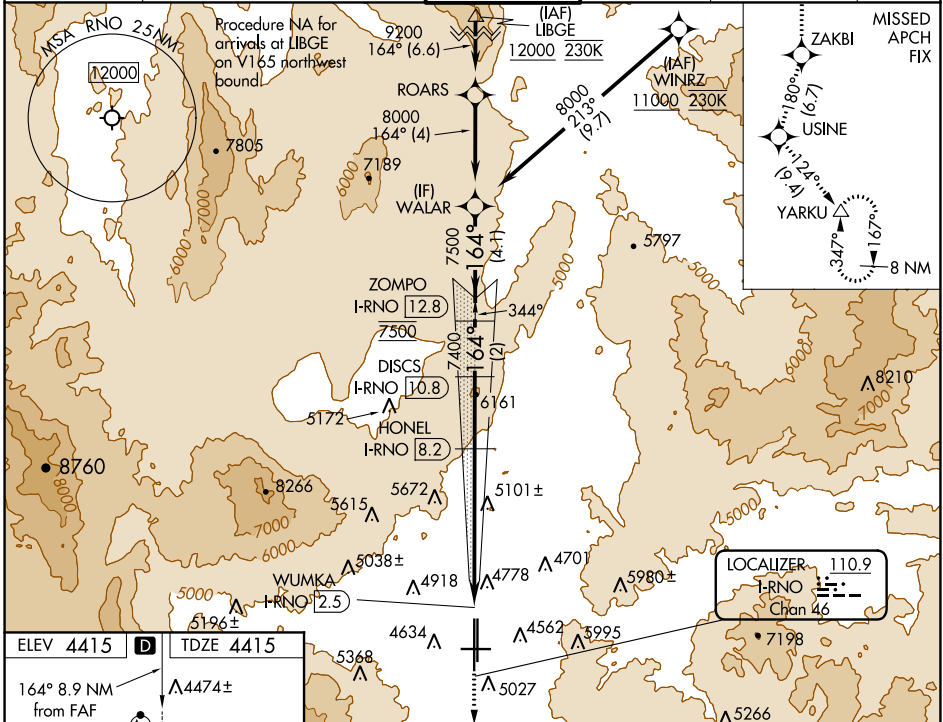
RENO/TAHOE INTL (RNO)


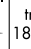
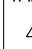

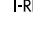
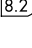

LOC/DME I-RNO 110.9 Chan 46	APP CRS 164°	Rwy Idg 10011 TDZE 4415 Apt Elev 4415
---	------------------------	--

⚠ DME/DME RNP-0.3 NA. RNAV 1-GPS required.
⚠ DME required. Circling Rwy 7 NA at night.
⚠ -15°C # For inop MALSRL, increase S-ILS 16R all Cats visibility to 2 1/2 mile.
 † RVR 1800 authorized with use of FD or AP or HUD to DA.

MALSRL

MISSED APPROACH: Climb to 13000 on the RNAV missed approach route to YARKU and hold, continue climb-in-hold to 13000.
 † Missed approach requires minimum climb of 390 feet per NM to 8000.

D-ATIS 135.8 363.0	NORCAL APP CON 119.2 279.55	RENO TOWER 118.7 257.8	GND CON 121.9 348.6	CLNC DEL 124.9 370.85	CPDLC
------------------------------	---------------------------------------	---	-------------------------------	---------------------------------	-------



ELEV 4415	D	TDZE 4415			
164° 8.9 NM from FAF	Λ 4474±	Λ 4545±			
 ZAKBI  USINE  YARKU	VGSi and ILS glidepath not coincident (VGSi Angle 3.06/TCH 77).				
* LOC only.					
 WUMKA I-RNO [2.5]  HONEL I-RNO [8.2]  DISCS I-RNO [10.8]  ZOMPO I-RNO [12.8]	7400 6540* 7400 7500	164° 8000 GS 3.10° TCH 59			
0.6	2.2 NM	3.5 NM	2.6 NM	2 NM	4.1 NM

CATEGORY	A	B	C	D
S-ILS 16R †		4615/24	200 (200-1/2)	
S-ILS 16R #		5138-1 7/8	723 (800-1 7/8)	
S-LOC 16R	5420/40 1005 (1100-3/4)	5420/55 1005 (1100-1)	5420-2 1/2	1005 (1100-2 1/2)
C CIRCLING	5420-1 1/4 1005 (1100-1 1/4)	5420-1 1/2 1005 (1100-1 1/2)	6480-3	2065 (2100-3)

SW-4, 25 MAR 2021 to 22 APR 2021

SW-4, 25 MAR 2021 to 22 APR 2021