

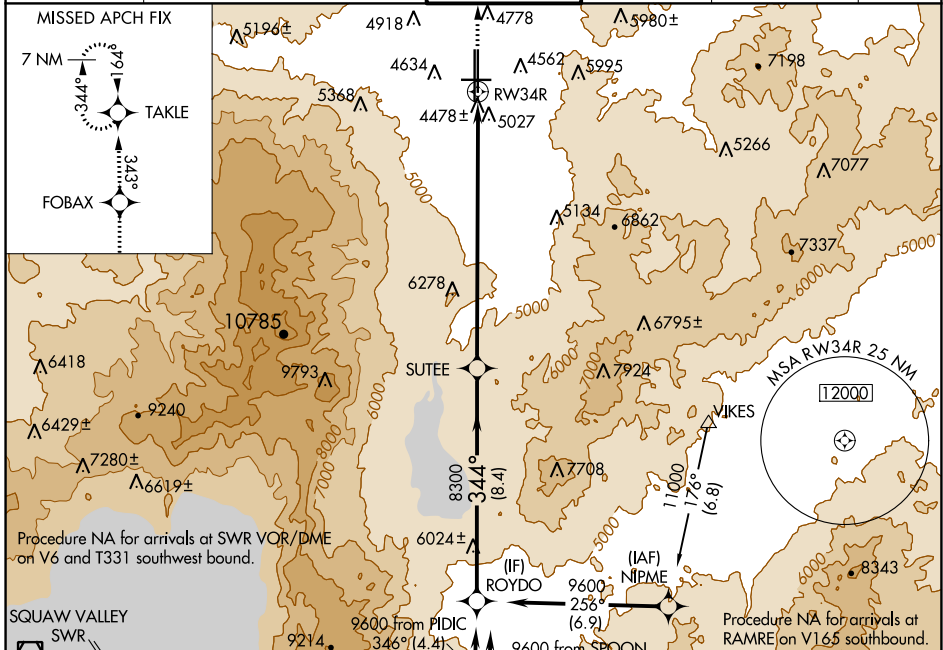
RNAV (GPS) Y RWY 34R

RENO/TAHOE INTL (RNO)

WAAS CH 40409 W34B	APP CRS 344°	Rwy Idg 9000 TDZE 4408 Apt Elev 4415
--	------------------------	---

33 -15°C	DME/DME RNP- 0.3 NA.	MISSED APPROACH: Climb to 10000 direct FOBAX and via 343° track to TAKLE and hold, continue climb-in-hold to 10000.
-----------------	----------------------	---

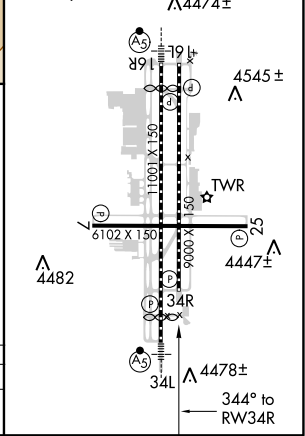
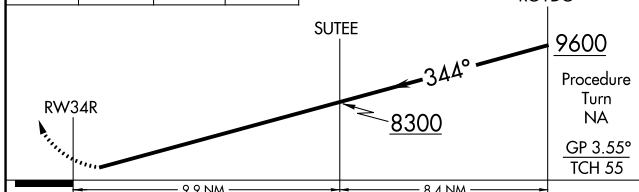
D-ATIS 135.8 363.0	NORCAL APP CON 119.2 279.55 126.3 353.9	RENO TOWER 118.7 257.8	GND CON 121.9 348.6	CLNC DEL 124.9 370.85	CPDLC
------------------------------	---	----------------------------------	-------------------------------	---------------------------------	-------



ELEV 4415	D TDZE 4408
HIRL Rwy 16R-34L and 16L-34R	
REIL Rwy 7, 16L, 25, and 34R	
MIRL Rwy 7-25	



10000	FOBAX	343°	TAKLE	VGSB and RNAV glidepath not coincident (VGSB Angle 3.35/TCH 75).
↑	⊙	tr	⊙	



CATEGORY	A	B	C	D
LPV DA	5043-2	635 (700-2)		NA

SW-4, 25 MAR 2021 to 22 APR 2021

SW-4, 25 MAR 2021 to 22 APR 2021