

# RNAV (GPS) X RWY 34R

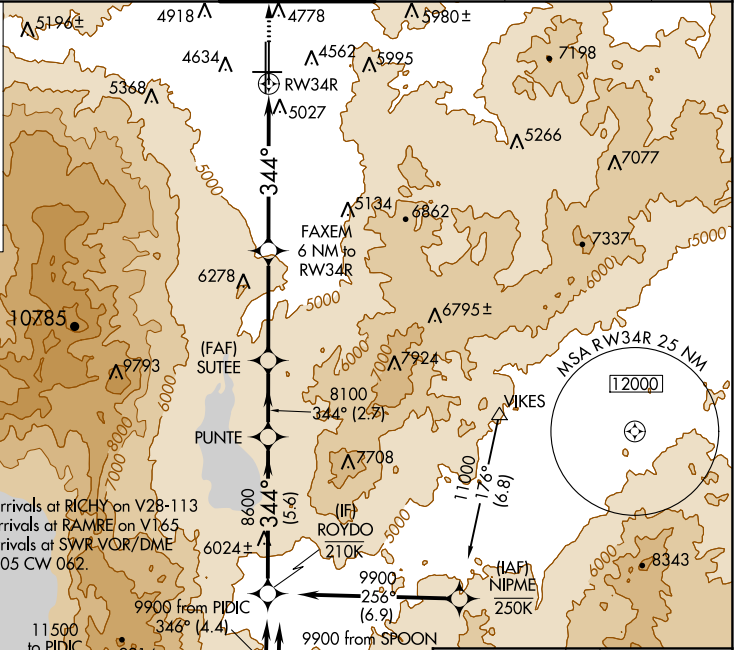
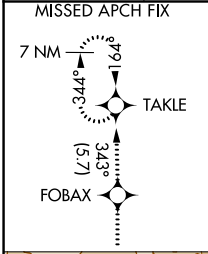
RENO/TAHOE INTL (RNO)

APP CRS <b>344°</b>	Rwy Idg TDZE Apt Elev	<b>9000</b> <b>4408</b> <b>4415</b>
------------------------	-----------------------------	---

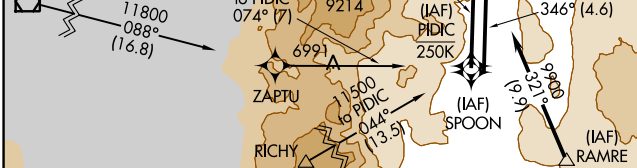
RNP APCH.  
 Circling Rwy 7 NA at night. Rwy 34R helicopter visibility reduction below 3/4 SM NA. Baro-VNAV NA.

MISSED APPROACH: Climb to 11000 direct FOBOX and on track 343° to TAKLE and hold, continue climb-in-hold to 11000.  
 # Missed approach requires minimum climb of 250 feet per NM to 5600.

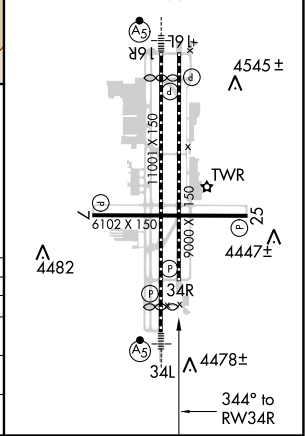
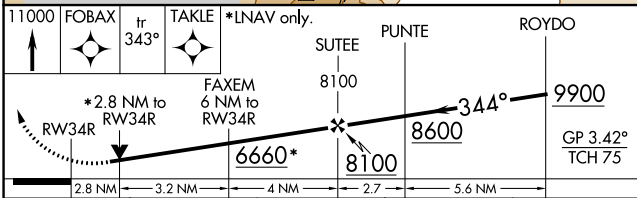
D-ATIS <b>135.8 363.0</b>	NORCAL APP CON <b>119.2 279.55 126.3 353.9</b>	RENO TOWER <b>118.7 257.8</b>	GND CON <b>121.9 348.6</b>	CLNC DEL <b>124.9 370.85</b>	CPDLC
------------------------------	---	----------------------------------	-------------------------------	---------------------------------	-------



Procedure NA for arrivals at RICHY on V28-113 southwest bound, arrivals at RAMRE on V165 southbound, and arrivals at SWR VOR/DME on airway radials 005 CW 062.



ELEV 4415	TDZE 4408
HIRL Rwys 16R-34L and 16L-34R	
REIL Rwys 7, 1L, 25, and 34R	
MIRL Rwy 7-25 $\Delta$ 4474±	



CATEGORY	A	B	C	D
LNAV/VNAV DA	5471-4 1063 (1100-4)			
LNAV MDA #	5380-1 1/4 972 (1000-1 1/4)	5380-1 1/2 972 (1000-1 1/2)	5380-3	972 (1000-3)
LNAV MDA	5500-1 1/4 1092 (1100-1 1/4)	5500-1 1/2 1092 (1100-1 1/2)	5500-3	1092 (1100-3)
CIRCLING	5500-1 1/4 1085 (1100-1 1/4)	5500-1 1/2 1085 (1100-1 1/2)	6460-3	2045 (2100-3)

SW-4, 25 MAR 2021 to 22 APR 2021

SW-4, 25 MAR 2021 to 22 APR 2021