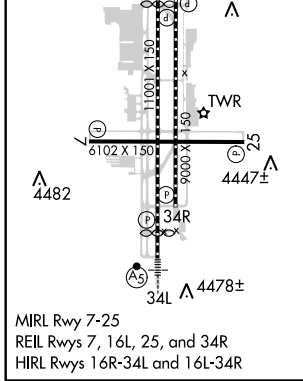
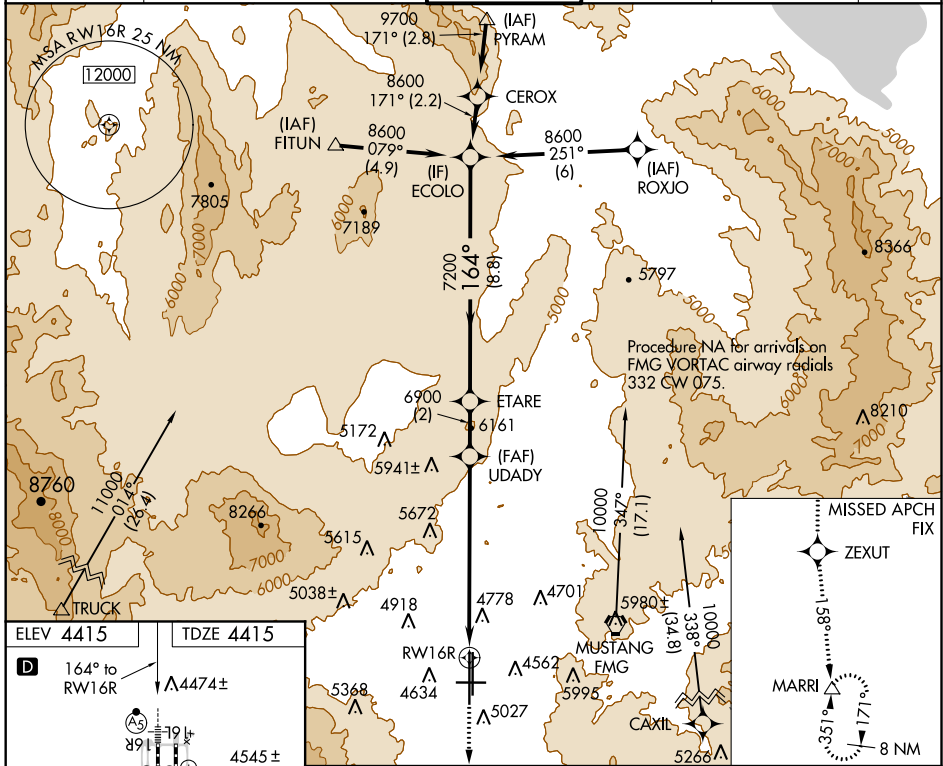


WAAS CH 78309 W16B	APP CRS 164°	Rwy Idg TDZE 4415 Apt Elev 4415
--	------------------------	---

RNAV (GPS) X RWY 16R

RENO/TAHOE INTL (RNO)

RNP APCH.		RENO TOWER 118.7 257.8		GND CON 121.9 348.6	CLNC DEL 124.9 370.85	CPDLC
<p>▼ Inoperative table does not apply to LNAV all Cats. ▲ For inoperative MALSR increase LPV all Cats visibility to 2 ¼.</p> <p>⚡ -15°C</p>		MALSR		MISSED APPROACH: Climb to 13000 direct ZEXUT and on track 158° to MARRI and hold.		



VGSi and descent angles not coincident (VGSi Angle 3.06/TCH 77).			
ECOLO	ETARE	UDADY	RWY 16R
8600	6900	6900	
164°		158°	
7200		17.1 (17.1)	
GP 3.10°		TCH 63	
8.8 NM	2 NM	7.2 NM	
CATEGORY	A	B	C
LPV DA	5239-2 ¼ 824 (900-2 ¼)		
LNAV MDA	6200/60 1785 (1800-1 ¼)	6200-1 ½ 1785 (1800-1 ½)	6200-3 1785 (1800-3)

SW-4, 25 MAR 2021 to 22 APR 2021

SW-4, 25 MAR 2021 to 22 APR 2021