

LOC Y RWY 16R

RENO/TAHOE INTL(RNO)

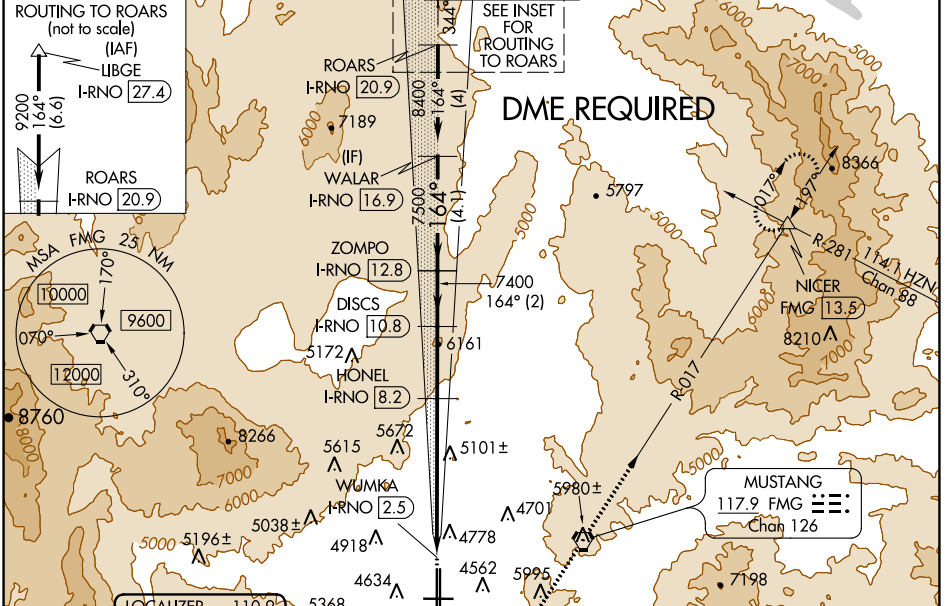
LOC/DME I-RNO 110.9 Chan 46	APP CRS 164°	Rwy Idg TDZE Apt Elev	16R 10001 4415 4415	16L 9000 4415 4415
--	------------------------	-----------------------------	---	--

▼ Circling NA for Cat E southwest of Rwy 7 and 34L. Circling Rwy 7 NA at night. For inop MALSR, increase S-LOC 16R* Cat E visibility to 3 miles.
Inop table does not apply to Cats C, D, E.

MALSR 16R

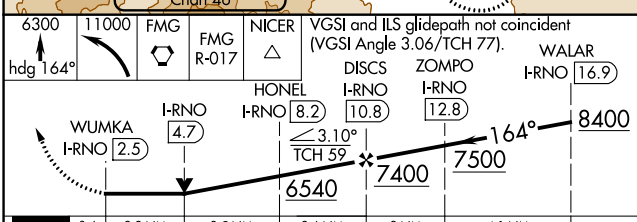
MISSED APPROACH: Climb to 6300 on heading 164° then climbing left turn 11000 direct FMG VORTAC and on FMG VORTAC R-017 to NICER INT and hold, continue climb-in-hold to 11000.
* Missed approach requires a minimum climb of 320 feet per NM to 8000.
† Missed approach requires a minimum climb of 260 feet per NM to 8000.

D-ATIS 135.8 363.0	NORCAL APP CON 119.2 279.55 126.3 353.9	RENO TOWER 118.7 257.8	GND CON 121.9 348.6	CLNC DEL 124.9 370.85	CPDLC
------------------------------	---	----------------------------------	-------------------------------	---------------------------------	-------

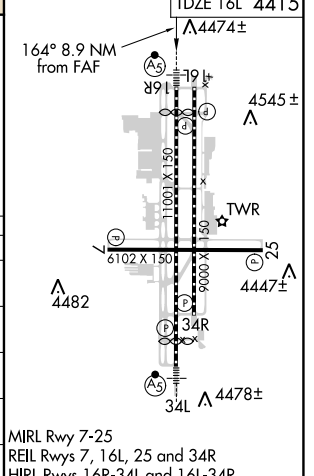


6300 11000 FMG FMG NICER
hdg 164° R-017 △

VGSI and ILS glidepath not coincident (VGSI Angle 3.06/TCH 77).



ELEV 4415	D TDZE 16R 4415
	TDZE 16L 4415



CATEGORY	A	B	C	D	E
S-LOC 16R *	5420/40 1005 (1100-3/4)	5420/55 1005 (1100-1)	5420-2 1/2	1005 (1100-2 1/2)	
S-LOC 16R †#	5720/40 1305 (1400-3/4)	5720/55 1305 (1400-1)	5720-3	1305 (1400-3)	
S-LOC 16R #	5920/40 1505 (1600-3/4)	5920/55 1505 (1600-1)	5920-3	1505 (1600-3)	6180-3 1765 (1800-3)
SIDESTEP 16L * #	5420-1 1/4 1005 (1100-1/4)	5420-1 1/2 1005 (1100-1/2)	5420-3	1005 (1100-3)	
C CIRCLING	5920-1 1/4 1505 (1600-1/4)	5920-1 1/2 1505 (1600-1/2)	6480-3	2065 (2100-3)	6700-3 2285 (2300-3)

MIRL Rwy 7-25
REIL Rwys 7, 16L, 25 and 34R
HIRL Rwys 16R-34L and 16L-34R

SW-4, 25 MAR 2021 to 22 APR 2021

SW-4, 25 MAR 2021 to 22 APR 2021