

(KENNO.KENNO2) 17173

# KENNO TWO ARRIVAL (RNAV)

AL-346 (FAA)

RENO/TAHOE INTL (RNO)

RENO, NEVADA

D-ATIS

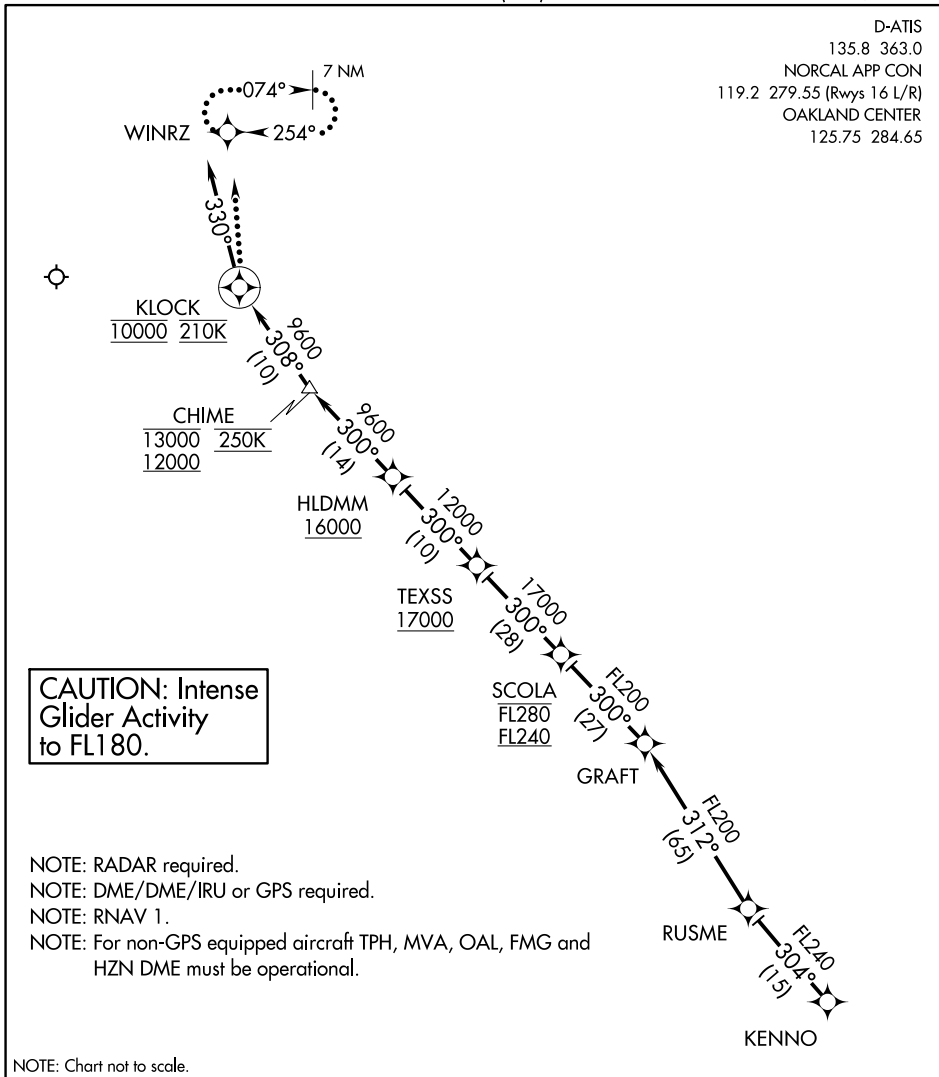
135.8 363.0

NORCAL APP CON

119.2 279.55 (Rwys 16 L/R)

OAKLAND CENTER

125.75 284.65



SW-4, 25 MAR 2021 to 22 APR 2021

SW-4, 25 MAR 2021 to 22 APR 2021

**CAUTION: Intense Glider Activity to FL180.**

- NOTE: RADAR required.
- NOTE: DME/DME/IRU or GPS required.
- NOTE: RNAV 1.
- NOTE: For non-GPS equipped aircraft TPH, MVA, OAL, FMG and HZN DME must be operational.

NOTE: Chart not to scale.

## ARRIVAL ROUTE DESCRIPTION

From KENNO on track 304° to RUSME, then as depicted to cross KLOCK at 10000' at 210K, then on heading 330°. Rwy 16L/16R expect RADAR vectors to final approach course.

### LOST COMMUNICATIONS:

At KLOCK, turn right direct to WINRZ and hold, maintain 10000'.

# KENNO TWO ARRIVAL (RNAV)

(KENNO.KENNO2) 31MAY12

RENO, NEVADA  
RENO/TAHOE INTL (RNO)