

(HARTT.HARTT1) 17173

HARTT ONE ARRIVAL (RNAV)

AL-346 (FAA)

RENO/TAHOE INTL (RNO)

RENO, NEVADA

D-ATIS

135.8 363.0

RENO TOWER

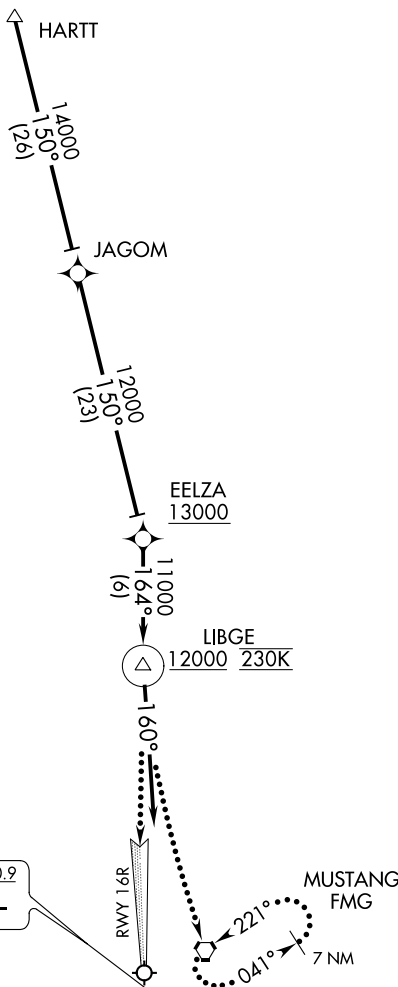
118.7 257.8

NORCAL APP CON

119.2 279.55

126.3 353.9

**CAUTION: Intense
Glider Activity
to FL180.**



LOCALIZER 110.9
 I-RNO
 Chan 46

NOTE: GPS required.

NOTE: RNAV 1.

NOTE: Cross EELZA at or above 13000.

NOTE: Cross LIBGE at or above 12000 at 230 KTS.

NOTE: Chart not to scale.

ARRIVAL ROUTE DESCRIPTION

From HARTT on track 150° to JAGOM, then on track 150° to cross EELZA at or above 13000, then on track 164° to cross LIBGE at or above 12000 at 230 KTS. Then on heading 160° expect ILS RWY 16R or RADAR vectors.

LOST COMMUNICATIONS

At LIBGE, proceed inbound via RWY 16R ILS approach. If unable, climbing left turn to 12000 direct FMG VORTAC and hold.

HARTT ONE ARRIVAL (RNAV)

(HARTT.HARTT1) 25AUG11

RENO, NEVADA

RENO/TAHOE INTL (RNO)

SW-4, 25 MAR 2021 to 22 APR 2021

SW-4, 25 MAR 2021 to 22 APR 2021