

HI-TACAN B

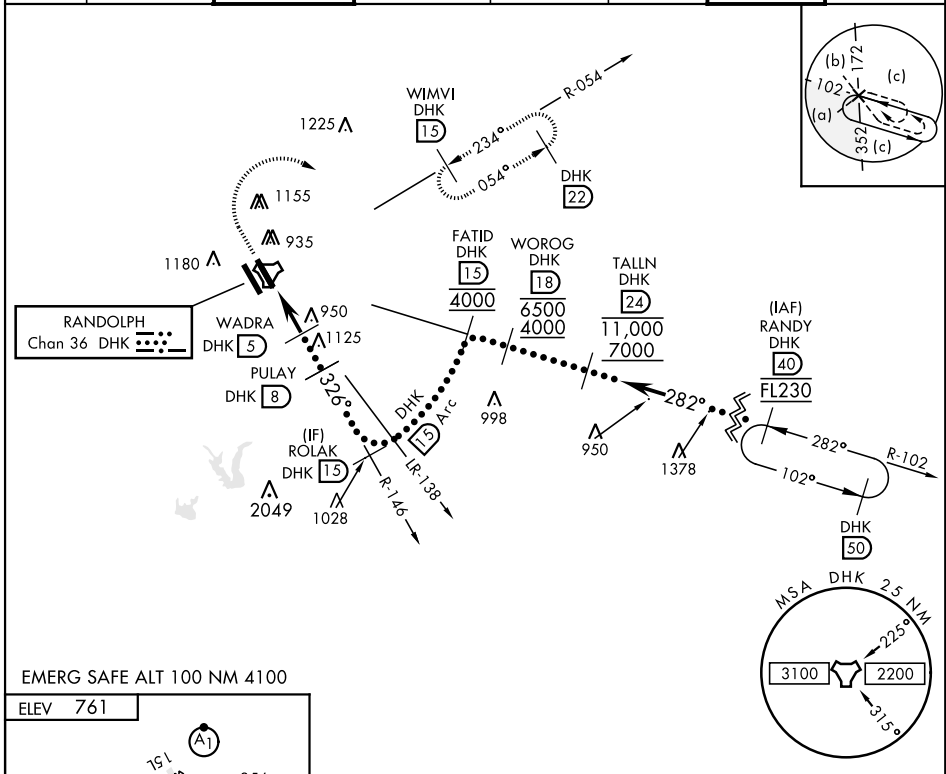
TACAN DHK Chan 36	APCH CRS 326°	Rwy ldg TDZE N/A Arprt Elev N/A 761	AL-341 [USAF]	RANDOLPH AFB (KRND)
--------------------------	----------------------	--	---------------	---------------------

RADAR required for missed approach monitoring.

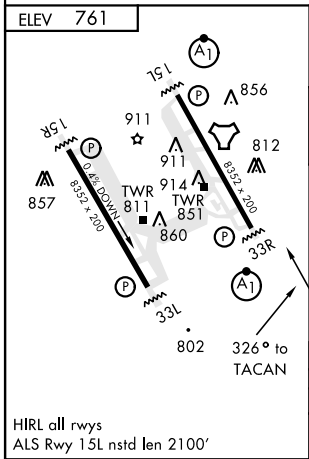
* Circling not authorized SW of Rwy 15L-33R.

MISSED APPROACH: Track 327° to 1500, then climbing right turn heading 084° to 3000. Intercept DHK TACAN R-054 direct WIMVI and hold.

ATIS ★ 290.525	SAN ANTONIO APP CON 128.05 318.1	RANDOLPH TOWER ★ 128.25 294.7	RANDOLPH GND CON 119.65 275.8	CLNC DEL (RWY 15L-33R) 338.35	HANGOVER ATIS ★ 327.8	HANGOVER TOWER ★ 120.5 291.1	HANGOVER GND CON 124.75 353.75
-----------------------	---	--------------------------------------	--------------------------------------	--------------------------------------	------------------------------	-------------------------------------	---------------------------------------



EMERG SAFE ALT 100 NM 4100



ELEV 761	1500	3000		
↑ tr 327°	↑ hdg 084°			
TACAN	JUNAB (1.4)	WADRA (5)	PULAY (8)	ROLAK (15)
	2100	2100	3000	
0.5	3.6 NM			
CATEGORY	C	D	E	
CIRCLING*	1260-1½ 499 (500-1½)	1800-3	1039	(1100-3)

HI-TACAN B

SC-3, 25 MAR 2021 to 22 APR 2021

SC-3, 25 MAR 2021 to 22 APR 2021