

HI-ILS or LOC Z RWY 33R

LOC I-RND 109.3	APCH CRS 325°	Rwy ldg TDZE Arprt Elev 8352 733 761	AL-341 [USAF]	RANDOLPH AFB (KRND)
---------------------------	-------------------------	--	---------------	---------------------

RADAR or DME required.

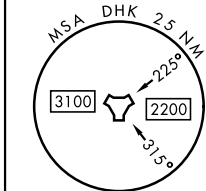
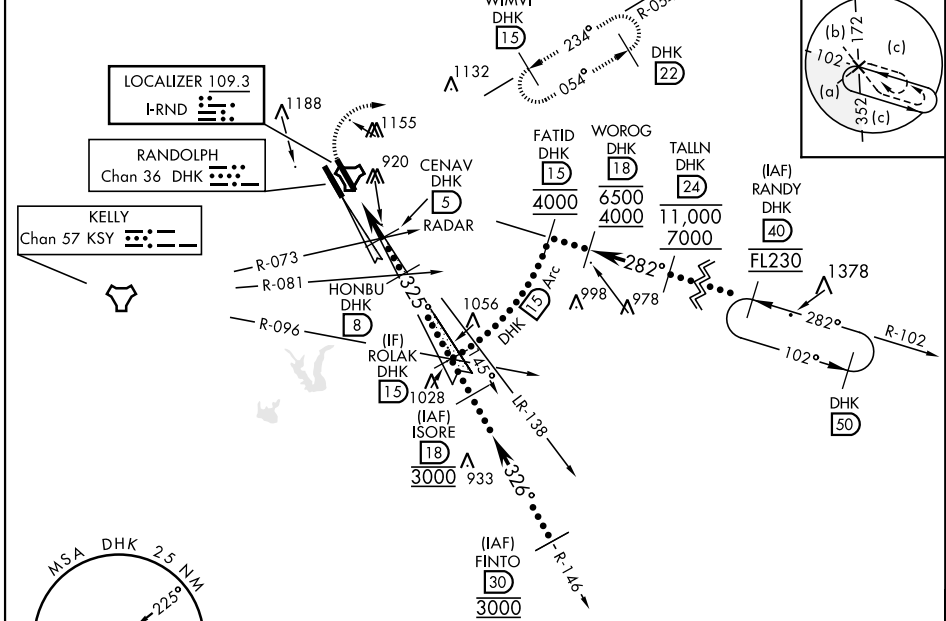
* When ALS inop, increase RVR to 40, vis to 3/4 mile.
 ** When ALS inop, increase vis to 1 1/8 miles.
 *** Circling not authorized SW of Rwy 15L-33R.

ALSF-1 

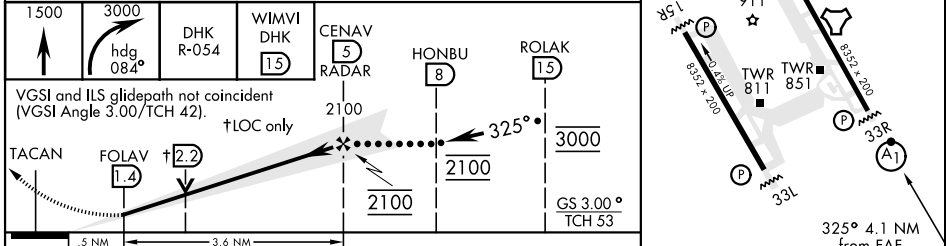
MISSED APPROACH: Climb to 1500, then climbing right turn heading 084° to 3000, intercept DHK R-054 to WIMVI and hold.

ATIS ★ 290.525	SAN ANTONIO APP CON 128.05 318.1	RANDOLPH TOWER ★ 128.25 294.7	RANDOLPH GND CON 119.65 275.8	CLNC DEL (RWY 15L-33R) 338.35	HANGOVER ATIS ★ 327.8	HANGOVER TOWER ★ 120.5 291.1	HANGOVER GND CON 124.75 353.75
--------------------------	--	---	---	---	---------------------------------	--	--

Simultaneous approaches authorized with Rwy 33L and 33R.



EMERG SAFE ALT 100 NM 4100



CATEGORY	C	D	E
	S-ILS 33R*	933/24	200 (200-1/2)
S-LOC 33R**	1180/45	447 (500-7/8)	
CIRCLING***	1260-1 1/2	1800-3	1039 (1100-3)
	499 (500-1 1/2)		

HIRL all rwys					
ALS Rwy 15L nstd len 2100'					
FAF to MAP 3.6 NM					
Knots	120	140	160	180	200
Min:Sec	1:48	1:33	1:21	1:12	1:05

UNIVERSAL CITY, TEXAS 29°32'N-98°17'W RANDOLPH AFB (KRND)

HI-ILS or LOC Z RWY 33R

SC-3, 25 MAR 2021 to 22 APR 2021

SC-3, 25 MAR 2021 to 22 APR 2021