

NUN VOR <b>108.8</b>	APP CRS <b>089°</b>	Rwy ldg TDZE Apt Elev	<b>7000</b> <b>97</b> <b>121</b>
-------------------------	------------------------	-----------------------------	--

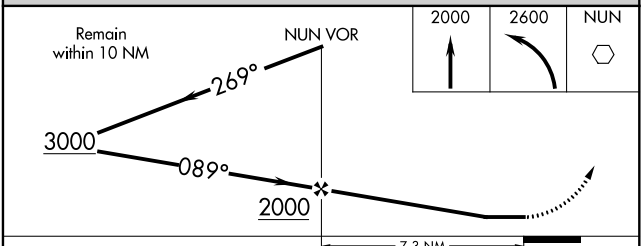
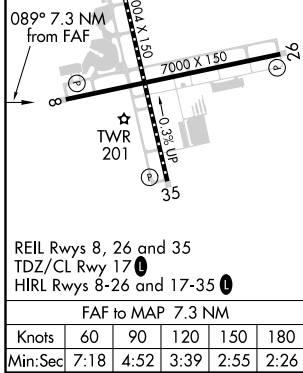
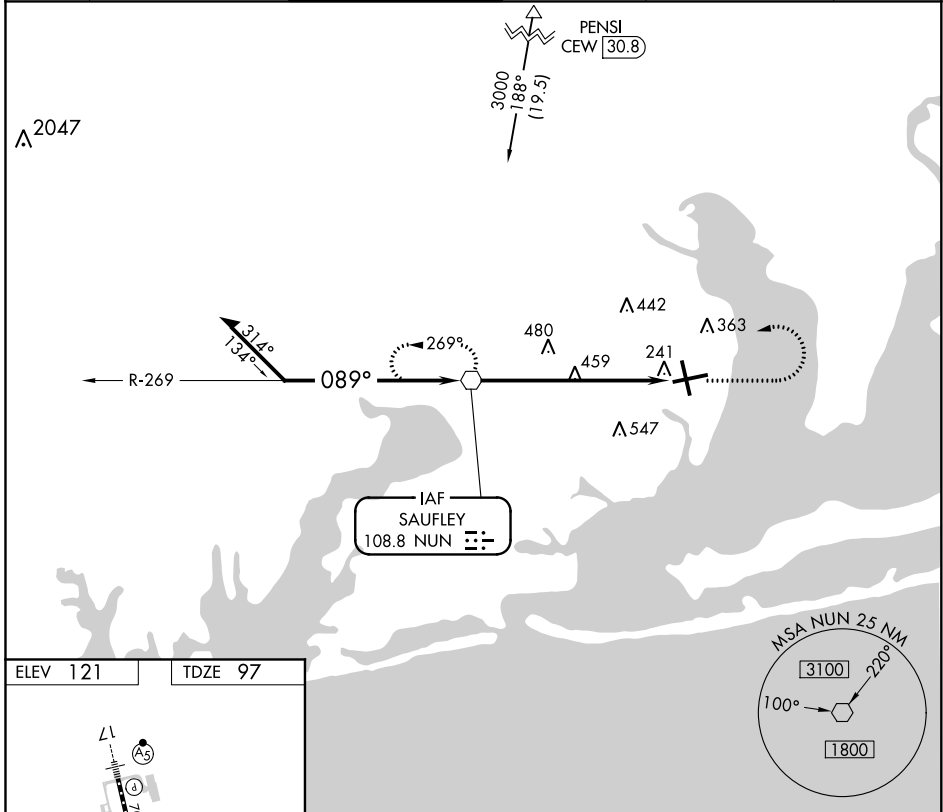
# VOR RWY 8

PENSACOLA INTL (PNS)

**▼** Helicopter visibility reduction below 3/4 SM NA.  
**▲** CAUTION: Intensive student training invof airport.

MISSED APPROACH: Climb to 2000 then climbing left turn to 2600 direct NUN VOR and hold.

ATIS <b>121.25</b>	PENSACOLA APP CON <b>119.0 269.375</b>	PENSACOLA TOWER ★ <b>119.9 (CTAF) 0 257.8</b>	GND CON <b>121.9 348.6</b>	CLNC DEL <b>123.725 256.875</b>	UNICOM <b>122.95</b>
-----------------------	---	--	-------------------------------	------------------------------------	-------------------------



CATEGORY	A	B	C	D
S-8	800-1	703 (700-1)	800-2	703 (700-2)
CIRCLING	800-1	679 (700-1)	800-2 679 (700-2)	800-2 1/4 679 (700-2 1/4)

SE-3, 25 MAR 2021 to 22 APR 2021

SE-3, 25 MAR 2021 to 22 APR 2021