

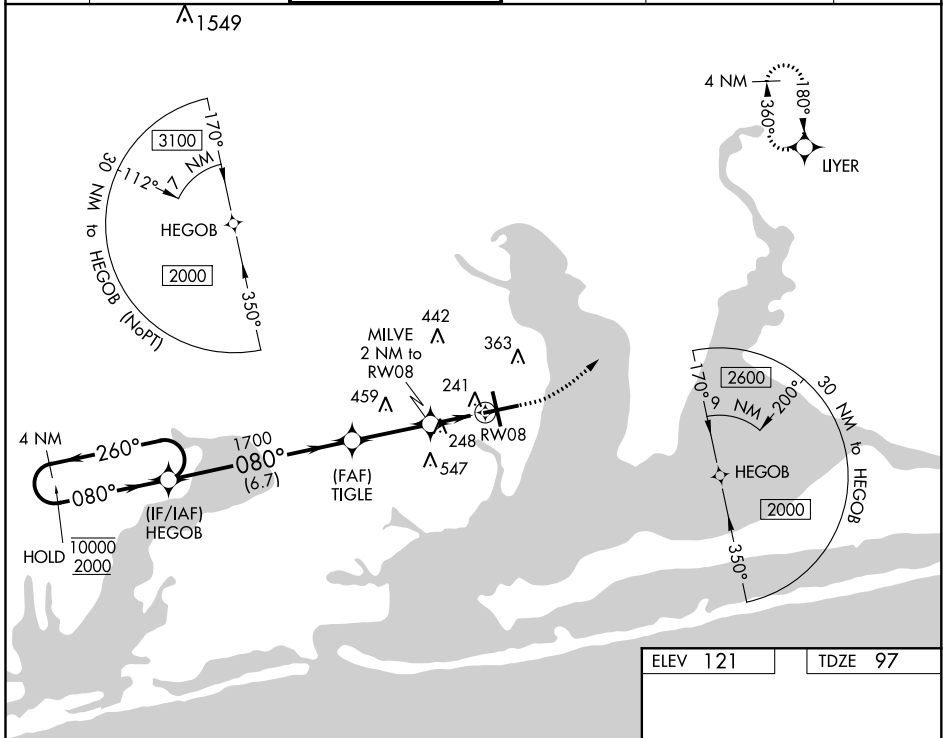
WAAS CH 86219 W08A	APP CRS 080°	Rwy Idg 7000 TDZE 97 Apt Elev 121
--	------------------------	--

RNAV (GPS) RWY 8

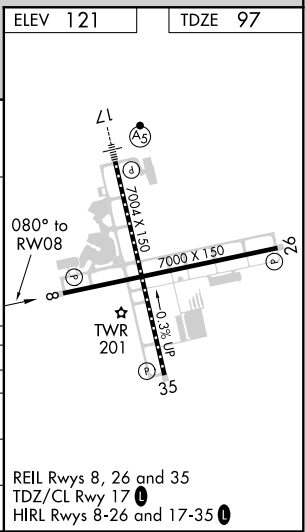
PENSACOLA INTL (PNS)

RNP APCH	<p>▼ Rwy 8 helicopter visibility reduction below 3/4 SM NA. For uncompensated Baro-VNAV systems, LNAV/VNAV NA below 1°C or above 54°C. CAUTION: Intensive VFR student training in vicinity of airport.</p>	<p>MISSED APPROACH: Climb to 600 then climbing left turn to 2200 direct LIYER and hold.</p>
----------	---	---

ATIS 121.25	PENSACOLA APP CON 119.0 269.375	PENSACOLA TOWER ★ 119.9 (CTAF) 0 257.8	GND CON 121.9 348.6	CLNC DEL 123.725 256.875	UNICOM 122.95
-----------------------	---	--	-------------------------------	------------------------------------	-------------------------



4 NM Holding Pattern HEGOB		600		2200		LIYER	
10000 ← 260°		TIGLE 1700		*LNAV only.			
2000 → 080°		*780		*1.3 NM to RW08			
GP 3.00° TCH 55		MILVE 2 NM to RW08		RW08			
		6.7 NM		2.9 NM		0.7 NM	
						1.3 NM	
CATEGORY	A	B	C	D			
LPV DA		347-1	250 (300-1)				
LNAV/VNAV DA		402-1	305 (300-1)				
LNAV MDA	560-1	463 (500-1)	560-1 3/8	463 (500-1 3/8)			
CIRCLING	580-1 459 (500-1)	680-1 559 (600-1)	680-1 1/2 559 (600-1 1/2)	680-2 559 (600-2)			



SE-3, 25 MAR 2021 to 22 APR 2021

SE-3, 25 MAR 2021 to 22 APR 2021

REIL Rwy 8, 26 and 35
TDZ/CL Rwy 17
HIRL Rwy 8-26 and 17-35