

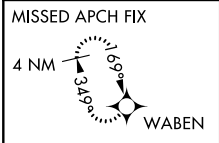
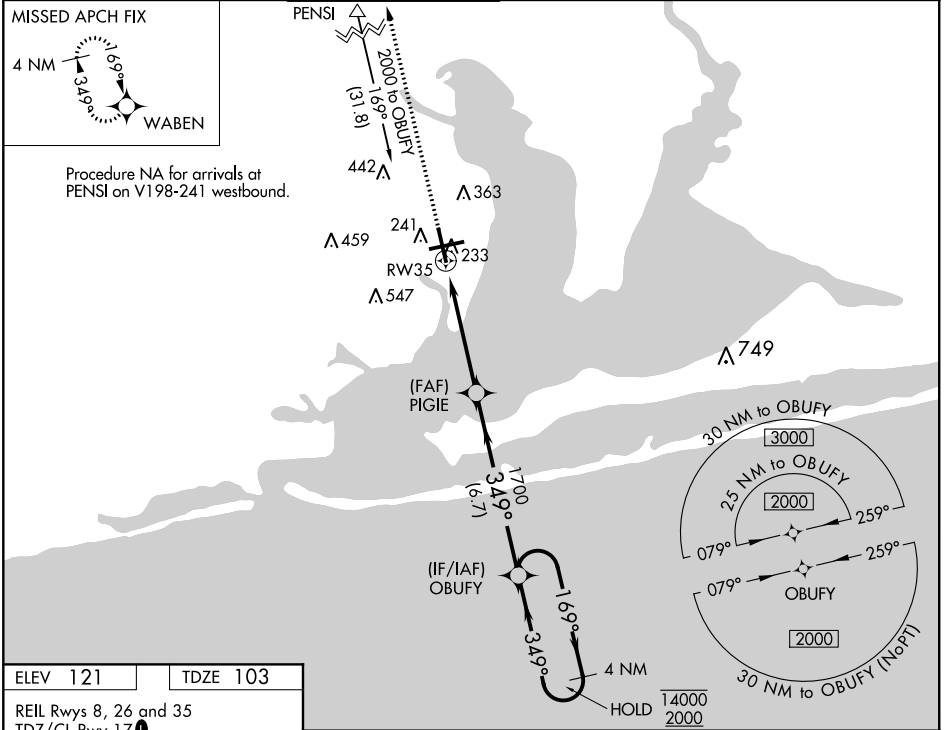
WAAS CH 40020 W35A	APP CRS 349°	Rwy Idg 7004 TDZE 103 Apt Elev 121
--	------------------------	---

RNAV (GPS) RWY 35

PENSACOLA INTL (PNS)

RNP APCH.
 ▼ For uncompensated Baro-VNAV systems, LNAV/VNAV NA below 1°C or above 54°C. CAUTION: Intensive VFR student training in vicinity of airport.
 MISSED APPROACH: Climb to 2700 direct WABEN and hold.

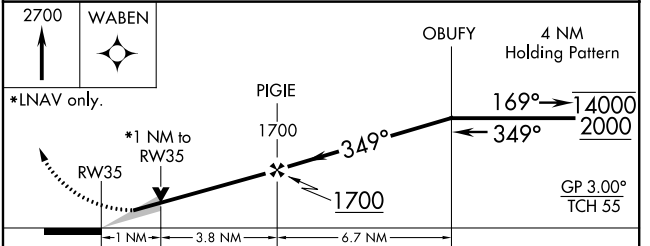
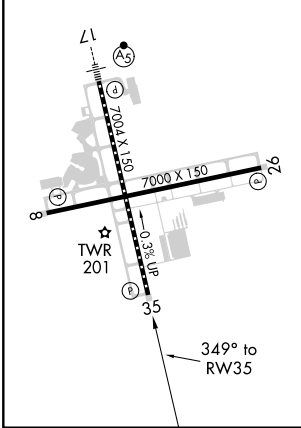
ATIS 121.25	PENSACOLA APP CON 119.0 269.375	PENSACOLA TOWER ★ 119.9 (CTAF) 0 257.8	GND CON 121.9 348.6	CLNC DEL 123.725 256.875	UNICOM 122.95
-----------------------	---	--	-------------------------------	------------------------------------	-------------------------



Procedure NA for arrivals at PENSI on V198-241 westbound.

ELEV 121	TDZE 103
-----------------	-----------------

REIL Rwy 8, 26 and 35
 TDZ/CL Rwy 17
 HIRL Rwy 8-26 and 17-35



CATEGORY	A	B	C	D
LPV DA		303/40	200 (200-¾)	
LNAV/VNAV DA		384/45	281 (300-⅞)	
LNAV MDA		480/55	377 (400-1)	
CIRCLING	580-1	680-1	680-1½	680-2
	459 (500-1)	559 (600-1)	559 (600-1½)	559 (600-2)

SE-3, 25 MAR 2021 to 22 APR 2021

SE-3, 25 MAR 2021 to 22 APR 2021