

# LOC/DME RWY 31

LOC I-PLH <b>111.7</b>	APCH CRS <b>308°</b>	Rwy ldg <b>10,000</b> TDZE <b>1276</b> Arprt Elev <b>1291</b>	AL-299 [USAF]	TINKER AFB (KTIK)
---------------------------	-------------------------	---	---------------	-------------------

▼ \* When ALS inop, increase CAT AB RVR to 55 and vis to 1 mile, CAT CDE vis to 1 $\frac{3}{8}$ .  
 \*\* CAT E Circling not authorized in sector S of Rwy 13-31 and W of Rwy 18-36.

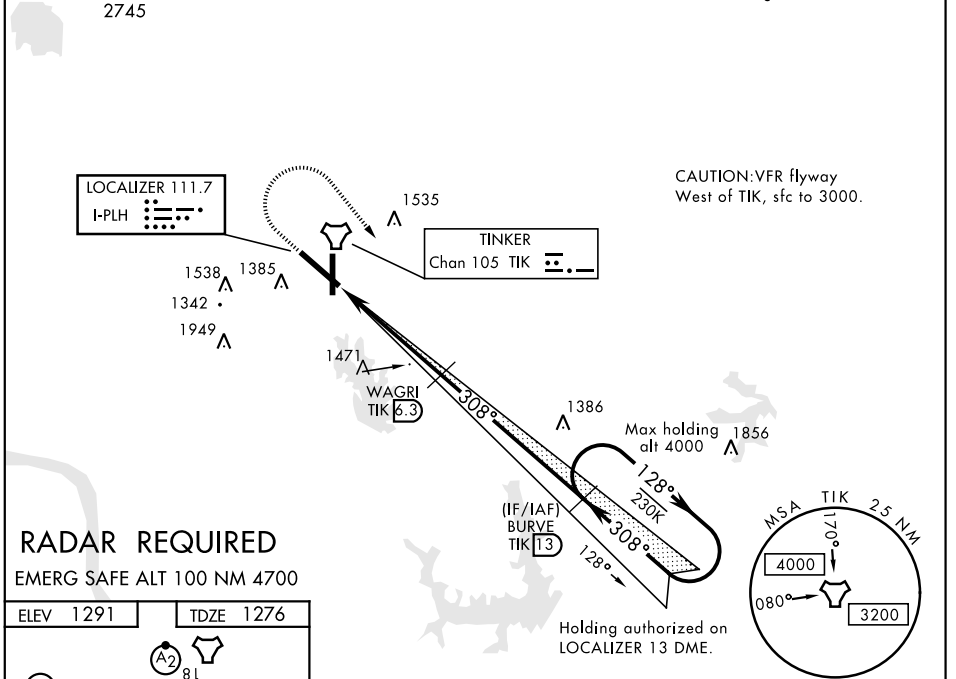
SALS **(A2)**

† MISSED APPROACH: Climb straight ahead to 2500, then turn right to 4000 direct I-PLH and TIK 13 DME (BURVE) and hold.

ATIS ★ <b>270.1</b>	OKC CITY APP CON <b>120.45 288.325</b>	TINKER TOWER <b>124.45 251.05</b>	GND CON <b>121.8 275.8</b>	CLNC DEL <b>119.7 335.8</b>	ASR
------------------------	---	--------------------------------------	-------------------------------	--------------------------------	-----

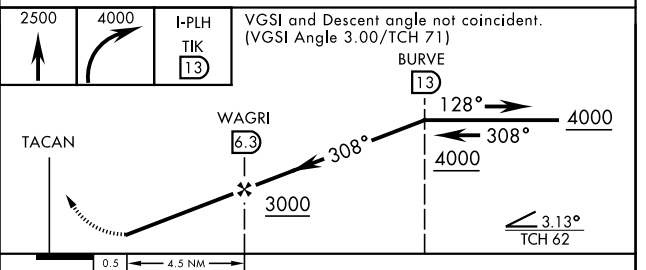
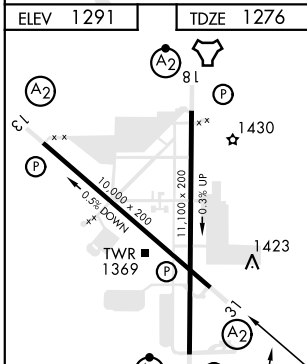
When VGSI inop, procedure NA at night

† Missed approach requires use of RNAV or ATC radar monitoring.



## RADAR REQUIRED

EMERG SAFE ALT 100 NM 4700



CATEGORY	A	B	C	D	E
S-LOC 31*	1740/50	464 (500-1)	1740/60	464 (500-1 $\frac{1}{2}$ )	
CIRCLING**	1840-1	549 (600-1)	1960-1 $\frac{3}{4}$ 669 (700-1 $\frac{3}{4}$ )	1980-2 $\frac{1}{4}$ 689 (700-2 $\frac{1}{4}$ )	1960-2 $\frac{1}{4}$ 669 (700-2 $\frac{1}{4}$ )

# LOC/DME RWY 31

SC-1, 25 MAR 2021 to 22 APR 2021

SC-1, 25 MAR 2021 to 22 APR 2021