

LOC RWY 13

LOC I-EVG 111.7	APCH CRS 126°	Rwy Idg 10,000 TDZE 1241 Arpt Elev 1291
---------------------------	-------------------------	--

AL-299 [USAF]

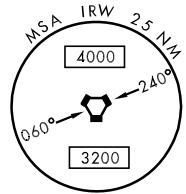
TINKER AFB (KTIK)

<p>▼ * When ALS inop, increase CAT AB RVR to 50 and vis to 1 mile, CAT C RVR to 60 and vis to 1¼ miles, CAT D vis to 1½ miles, CAT E vis to 1¾ miles.</p>	SALS (A2)	MISSED APPROACH: Climb straight ahead to 2500, then left turn to intercept IRW R-075 to 25 DME (WEVAV) and hold at 3000.

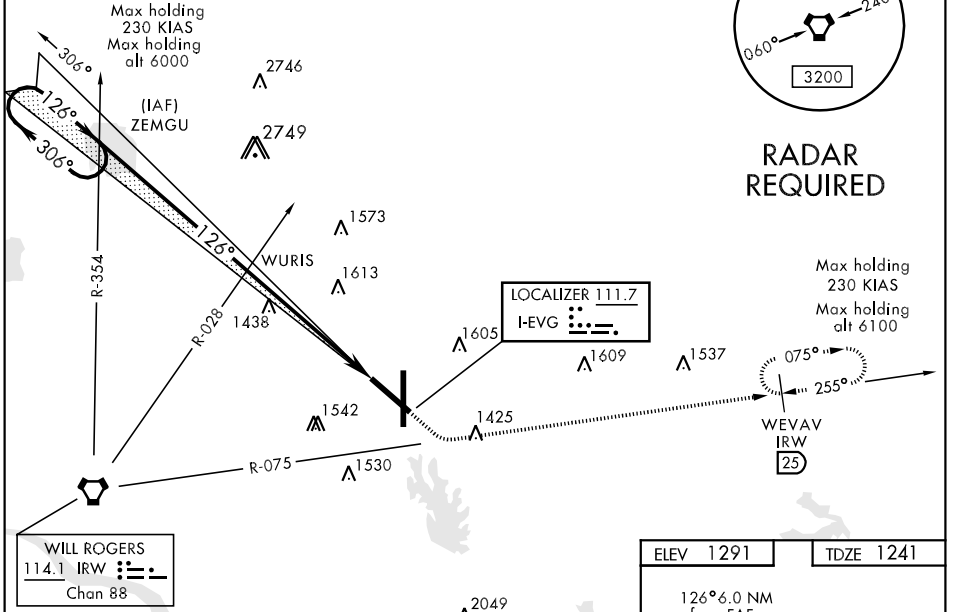
ATIS ★ 270.1	OKC CITY APP CON 124.2 336.4	TINKER TOWER 124.45 251.05	GND CON 121.8 275.8	CLNC DEL 119.7 335.8	ASR
------------------------	--	--------------------------------------	-------------------------------	--------------------------------	-----

** CAT E Circling not authorized in sector S of Rwy 13-31 and W of Rwy 18-36.

CAUTION: VFR Flyway from FAF to MAP, SFC to 3000 MSL.



RADAR REQUIRED

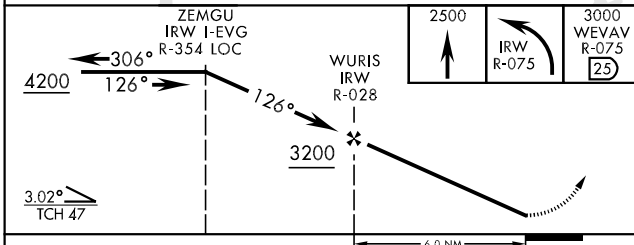


SC-1, 25 MAR 2021 to 22 APR 2021

SC-1, 25 MAR 2021 to 22 APR 2021

WILL ROGERS
114.1 IRW
Chan 88

EMERG SAFE ALT 100 NM 4700



ELEV 1291	TDZE 1241
-----------	-----------

HIRL Rwy 18-36, 13-31					
FAF to MAP 6 NM					
Knots	60	90	120	150	180
Min:Sec	6:00	4:00	3:00	2:24	2:00

CATEGORY	A	B	C	D	E
S-13 *	1740/40	499 (500-¾)	1740/50 499 (500-1)	1740/60 499 (500-1¼)	1740-1½ 499 (500-1½)
CIRCLING**	1880-1	589 (600-1)	1880-1½ 589 (600-1½)	1980-2¼ 689 (700-2¼)	2040-2¾ 749 (800-2¾)

LOC RWY 13