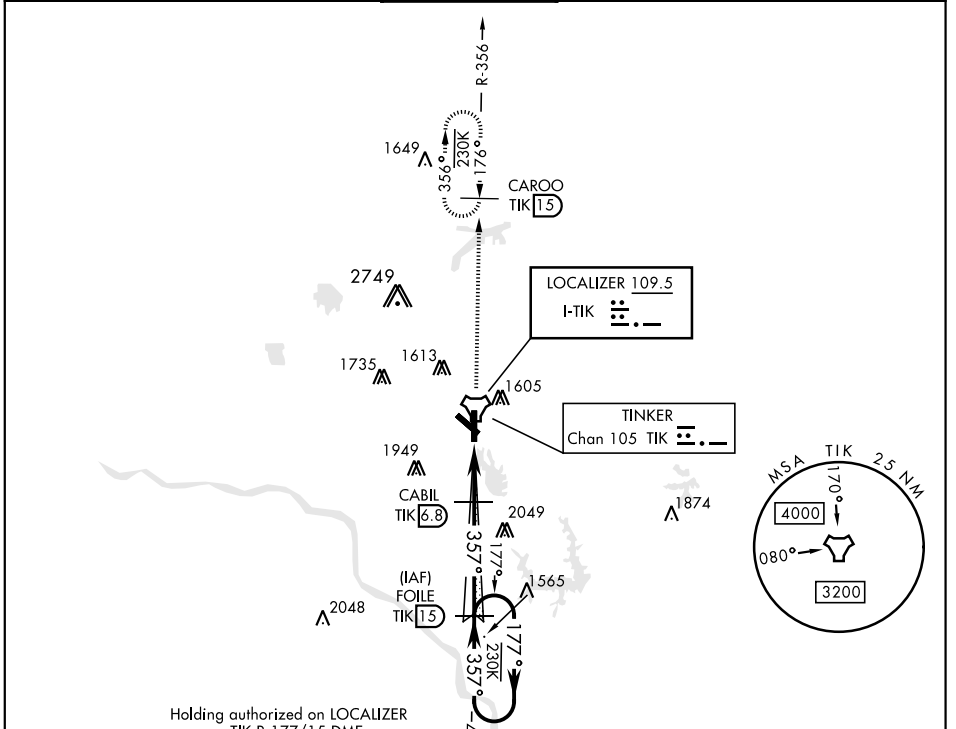


# ILS or LOC/DME Z RWY 36

LOC I-TIK <b>109.5</b>	APCH CRS <b>357°</b>	Rwy ldg <b>11,100</b> TDZE <b>1291</b> Arprt Elev <b>1291</b>	AL-299 [USAF]	TINKER AFB (KTIK)
* When ALS inop, increase CAT ABC RVR to 50 and vis to 1 mile, CAT DE RVR to 60 and vis to 1¼ mile. ** CAT E Circling NA to Rwy 18 and in sector S of Rwy 13-31 and W of Rwy 18-36.			ALSF-1 	MISSED APPROACH: Climb to 4000 on TIK TACAN R-356 to CAROO and hold.

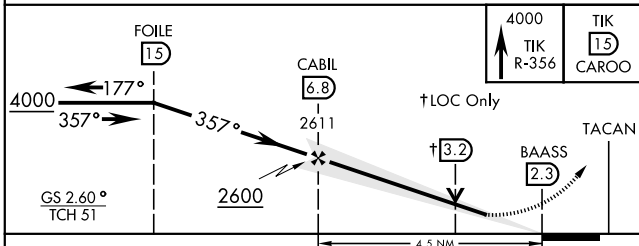
ATIS ★ <b>270.1</b>	OKE CITY APP CON <b>120.45 288.325</b>	TINKER TOWER <b>124.45 251.05</b>	GND CON <b>121.8 275.8</b>	CLNC DEL <b>119.7 335.8</b>	ASR
------------------------	---	--------------------------------------	-------------------------------	--------------------------------	-----



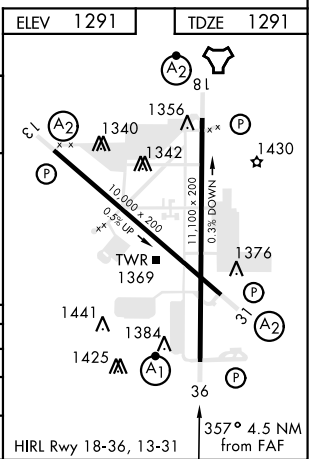
SC-1, 25 MAR 2021 to 22 APR 2021

SC-1, 25 MAR 2021 to 22 APR 2021

EMERG SAFE ALT 100 NM 4700



CATEGORY	A	B	C	D	E
S-ILS 36	1491/24		200	(200-½)	
S-LOC 36 *	1680/24	389 (400-½)	1680/35 389 (400-¾)		
CIRCLING **	1820-1 529 (600-1)	1840-1 549 (600-1)	1960-1¾ 669 (700-1¾)	1960-2 669 (700-2)	1960-2¼ 669 (700-2¼)



# ILS or LOC/DME Z RWY 36