

OKLAHOMA CITY, OKLAHOMA

# HI-TACAN Y RWY 36

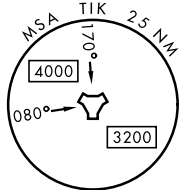
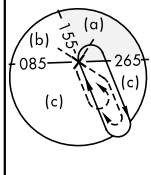
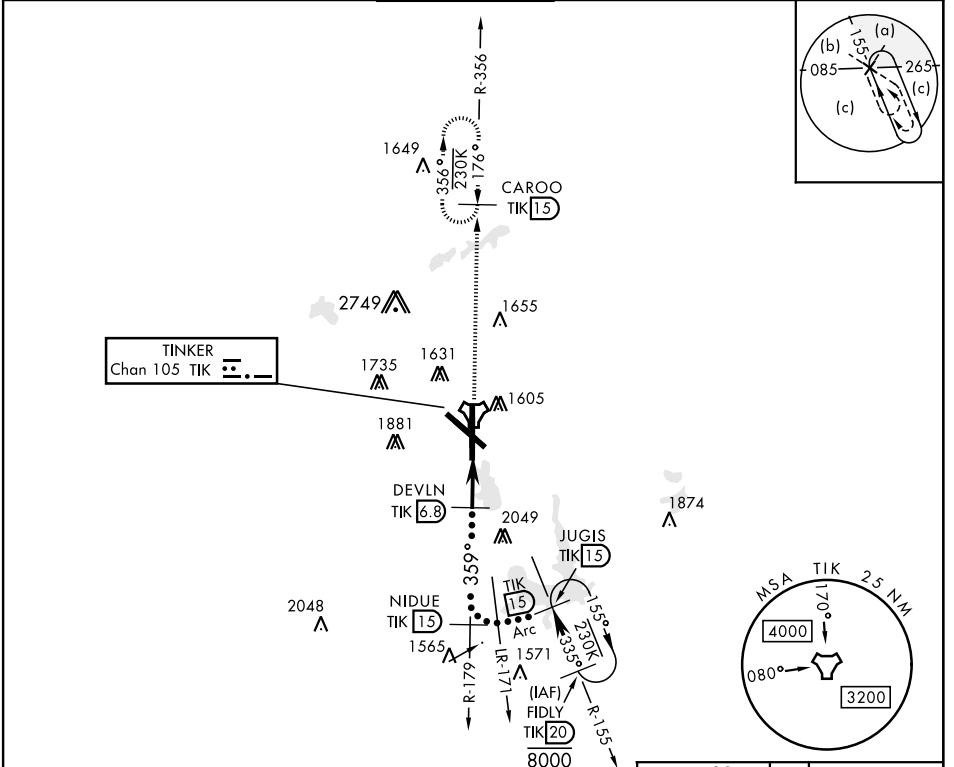
TACAN TIK Chan <b>105</b>	APCH CRS <b>359°</b>	Rwy ldg <b>11,100</b> TDZE <b>1291</b> Arprt Elev <b>1291</b>
------------------------------	-------------------------	---

JAL-299 [USAF]

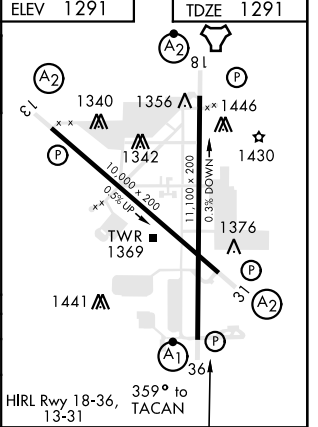
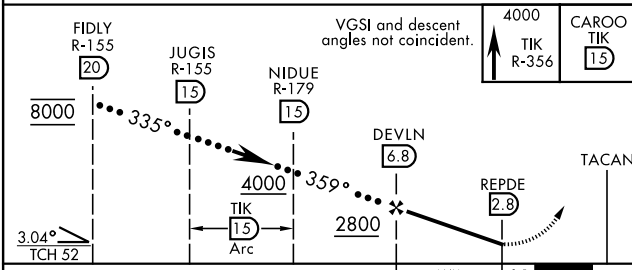
TINKER AFB (KTIK)

<p>▼ * When ALS inop, increase CAT CDE vis by 1/2 mile. ** CAT E circling not authorized in sector S of Rwy 13-31. Circling not authorized to Rwy 18.</p>	<p>ALSF-1 <b>(A1)</b></p>	<p>MISSED APPROACH: Climb to 4000 on TIK TACAN R-356 to CAROO and hold.</p>
---	-------------------------------	---

ATIS* <b>270.1</b>	OKE CITY APP CON <b>120.45 288.325</b>	TINKER TOWER <b>124.45 251.05</b>	GND CON <b>121.8 275.8</b>	CLNC DEL <b>119.7 335.8</b>	ASR
-----------------------	---	--------------------------------------	-------------------------------	--------------------------------	-----



EMERG SAFE ALT 100 NM 4700



CATEGORY	C	D	E
S-36 *	1720/40	429	(500-3/4)
CIRCLING **	1960-1 3/4 669 (700-1 3/4)	1960-2 669 (700-2)	1960-2 1/2 669 (700-2 1/2)

HIRL Rwy 18-36, 13-31  
359° to TACAN

OKLAHOMA CITY, OKLAHOMA

35° 25' N-97° 23' W

TINKER AFB (KTIK)

Amtd 4 23APR20

# HI-TACAN Y RWY 36

SC-1, 25 MAR 2021 to 22 APR 2021

SC-1, 25 MAR 2021 to 22 APR 2021