

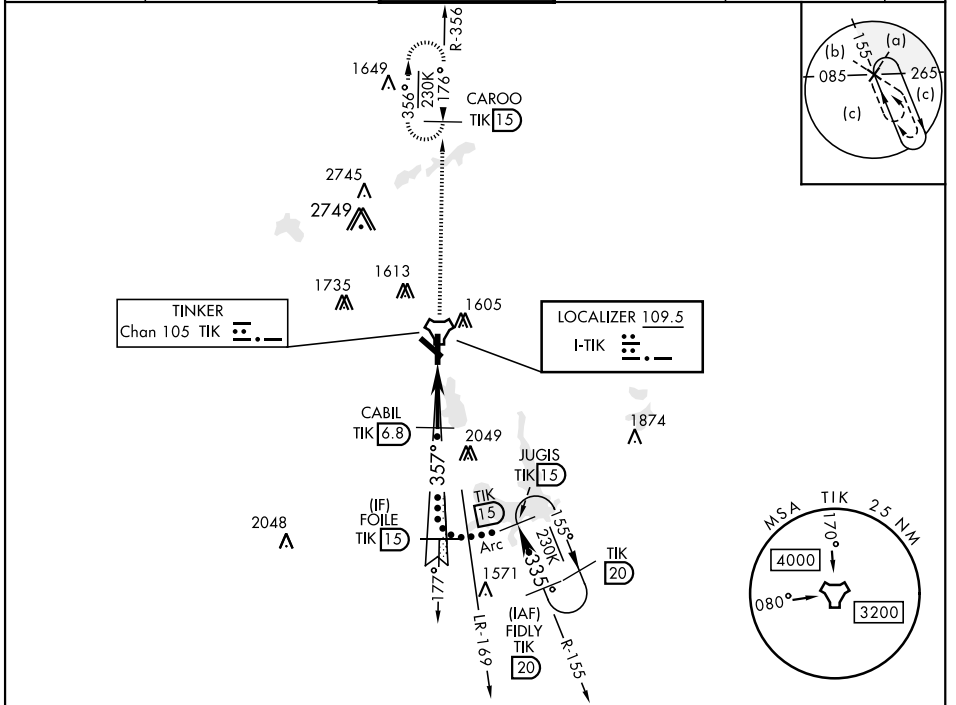
# HI-ILS or LOC/DME Y RWY 36

LOC I-TIK <b>109.5</b>	APCH CRS <b>357°</b>	Rwy ldg <b>11,100</b> TDZE <b>1291</b> Arprt Elev <b>1291</b>	JAL-299 [USAF]	TINKER AFB (KTIK)
---------------------------	-------------------------	---	----------------	-------------------

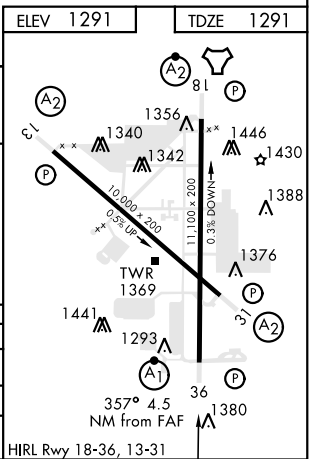
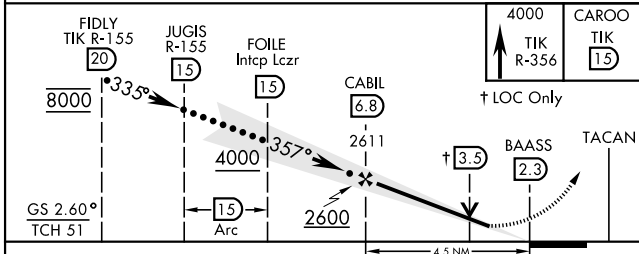
▼ \* When ALS inop, increase CAT CDE RVR to 40 and vis to 3/8 mile.  
 \*\* When ALS inop, increase CAT CDE RVR to 45 and vis to 7/8 mile.  
 \*\*\* CAT E circling NA in sector S of Rwy 13-31.  
 Circling not authorized to RWY 18.

ALSF-1  
 MISSED APPROACH: Climb to 4000 on TIK R-356 to CAROO and hold.

ATIS * <b>270.1</b>	OKE CITY APP CON <b>120.45 288.325</b>	TINKER TOWER <b>124.45 251.05</b>	GND CON <b>121.8 275.8</b>	CLNC DEL <b>119.7 335.8</b>	ASR
------------------------	---	--------------------------------------	-------------------------------	--------------------------------	-----



EMERG SAFE ALT 100 NM 4700



CATEGORY	C	D	E
S-ILS 36*	1491/24	200	(200-1/2)
S-LOC 36**	1680/35	389	(400-%)
CIRCLING ***	1960-1 3/4 669 (700-1 3/4)	1960-2 669 (700-2)	1960-2 1/4 669 (700-2 1/4)

# HI-ILS or LOC/DME Y RWY 36

SC-1, 25 MAR 2021 to 22 APR 2021

SC-1, 25 MAR 2021 to 22 APR 2021