

SW-2, 25 MAR 2021 to 22 APR 2021

ARRIVAL ROUTE DESCRIPTION

- MRLT TRANSITION (MRLT.SHARR1)
- RPARK TRANSITION (RPARK.SHARR1)
- RUSME TRANSITION (RUSME.SHARR1)

LANDING OAK: From SHARR on track 232° to LOCKE, then on track 232° to cross CATTY at 8000, then on heading 280° or as assigned by ATC. Expect RADAR vectors to final approach course.

LANDING HWD: From SHARR on track 232° to LOCKE, then on track 232° to cross CATTY at 8000, then on heading 232° or as assigned by ATC. Expect RADAR vectors to final approach course.

NOTE: RADAR required.

NOTE: RNAV 1.

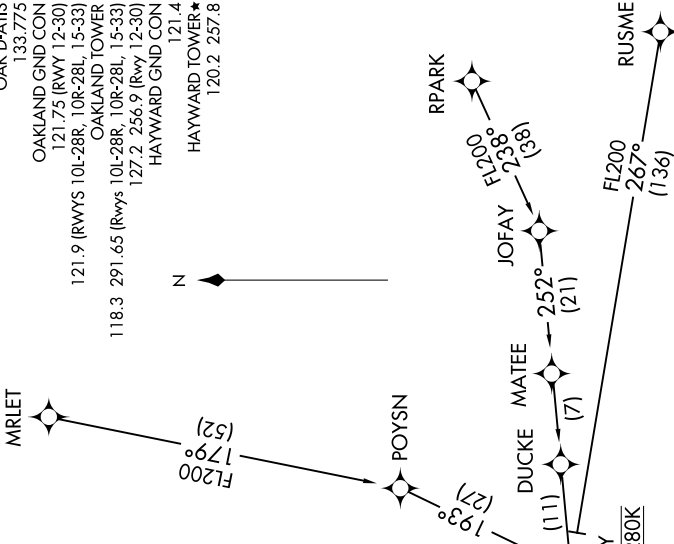
NOTE: DME/DME/IRU or GPS required.

NOTE: Turbojet and turboprop aircraft only.

NOTE: Landing OAK expect runway 10L/R and 12 unless otherwise assigned by ATC.

NOTE: Landing HWD expect runway 28L/R unless otherwise assigned by ATC.

- OAKLAND CENTER
134.37 281.5
- NORCAL APP CON
124.8 263.15
- HWD ATIS
126.7
- OAK D-ATIS
133.775
- OAKLAND GND CON
121.75 (RWY 12-30)
- 121.9 (RWYS 10L-28R, 10R-28L, 15-33)
- OAKLAND TOWER
118.3 291.65 (Rwys 10L-28R, 10R-28L, 15-33)
- 127.2 256.9 (RWY 12-30)
- HAYWARD GND CON
121.4
- HAYWARD TOWER*
120.2 257.8



NOTE: Chart not to scale.

SW-2, 25 MAR 2021 to 22 APR 2021