

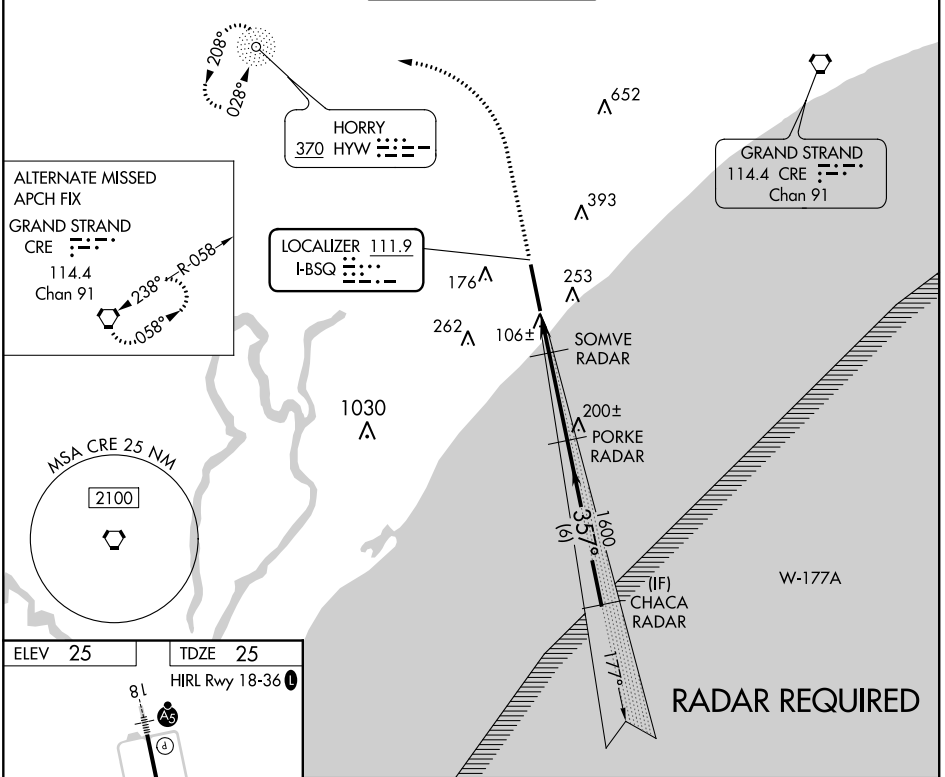
LOC I-BSQ <b>111.9</b>	APP CRS <b>357°</b>	Rwy Idg TDZE Apt Elev	<b>9503</b> <b>25</b> <b>25</b>
---------------------------	------------------------	-----------------------------	---------------------------------------

# ILS or LOC RWY 36

MYRTLE BEACH INTL (MYR)

<p><b>ADF and RADAR required.</b> For inop MALSF increase S-LOC 36 Cats D/E visibility to RVR 5000.</p>	<p>MALSF</p>	<p>MISSED APPROACH: Climb to 1000 then climbing left turn to 3000 direct HYW NDB and hold.</p>
---	--------------	--

<p>ATIS <b>123.925</b></p>	<p>MYRTLE BEACH APP CON * (171° - 321°) <b>127.4 257.95</b> (322° - 170°) <b>119.2 350.3</b></p>	<p>MYRTLE BEACH TOWER * <b>128.45</b> (CTAF) <b>0 259.3</b></p>	<p>GND CON <b>120.3 275.8</b></p>	<p>CLNC DEL <b>120.3</b></p>	<p>UNICOM <b>122.95</b></p>
--------------------------------	--	---	---------------------------------------	----------------------------------	---------------------------------



ELEV 25	TDZE 25
HIRL Rwy 18-36	
357° 4.8 NM from FAF	
FAF to MAP 4.8 NM	
Knots	60 90 120 150 180
Min:Sec	4:48 3:12 2:24 1:55 1:36

1000	3000	HYW	VGSI and ILS glidepath not coincident. (VGSI Angle 3.00/TCH 71).
* LOC only.		SOMVE RADAR	CHACA RADAR
		1600	1600
		580	GS 3.00° TCH 52

CATEGORY	A	B	C	D	E
S-ILS 36	225/40 200 (200-3/4)				
S-LOC 36	360/40 335 (400-3/4)				
CIRCLING	560-1	535 (600-1)	740-2 715 (800-2)	740-2 1/4 715 (800-2 1/4)	740-2 1/2 715 (800-2 1/2)

SE-2, 25 MAR 2021 to 22 APR 2021

SE-2, 25 MAR 2021 to 22 APR 2021