


LOC/DME I-MYR <b>109.5</b> Chan 32	APP CRS <b>177°</b>	Rwy Idg <b>9503</b> TDZE <b>23</b> Apt Elev <b>25</b>
--	------------------------	---

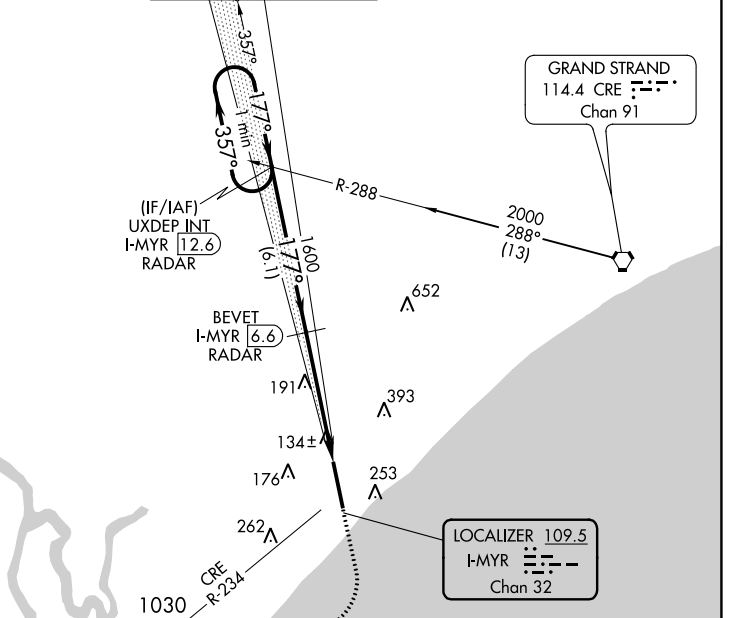
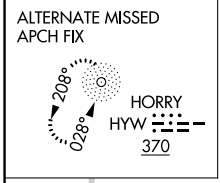
# ILS RWY 18 (SA CAT I & II)

MYRTLE BEACH INTL (MYR)

**▼** DME required. SA CAT I: Requires specific OPSPEC, MSPEC, or LOA approval and use of HUD to DH.  
**▲** SA CAT II: Reduced lighting: Requires specific OPSPEC, MSPEC, or LOA approval and use of autoland or HUD to touchdown.

**MALSR**  
  
**MISSED APPROACH:** Climb to 800 then climbing right turn to 3000 on heading 235° and CRE VORTAC R-234 to PLANN/24 DME and hold.

ATIS <b>123.925</b>	MYRTLE BEACH APP CON ★ (171° - 321°) <b>127.4 257.95</b> (322° - 170°) <b>119.2 350.3</b>	MYRTLE BEACH TOWER ★ <b>128.45 (CTAF) 0 259.3</b>	GND CON <b>120.3 275.8</b>	CLNC DEL <b>120.3</b>	UNICOM <b>122.95</b>
------------------------	---	--	-------------------------------	--------------------------	-------------------------



One Minute Holding Pattern

VGSI and ILS glidepath not coincident (VGSI Angle 3.00/TCH 64).

UXDEP INT I-MYR 12.6 RADAR

BEVET I-MYR 6.6 RADAR

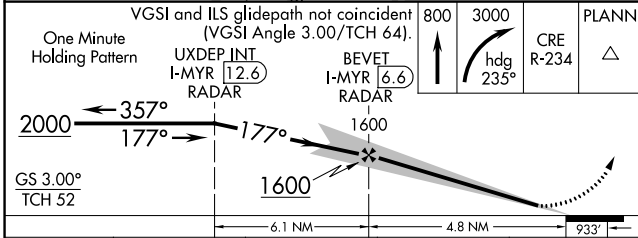
800

3000

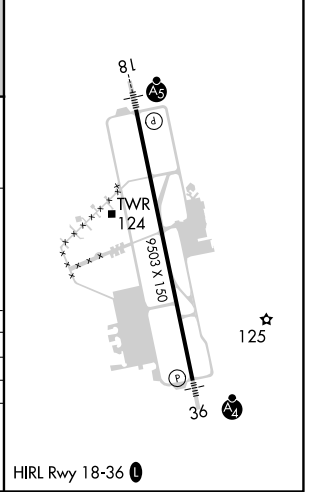
hdg 235°

CRE R-234

PLANN Δ



ELEV 25	TDZE 23
---------	---------



CATEGORY	A	B	C	D
S-ILS 18		SA CAT I RA 156/14	150 DA 173	
S-ILS 18		SA CAT II RA 101/12	100 DA 123	

**SA CATEGORY I & II SPECIAL AIRCREW & AIRCRAFT CERTIFICATION REQUIRED**

SE-2, 25 MAR 2021 to 22 APR 2021

SE-2, 25 MAR 2021 to 22 APR 2021