

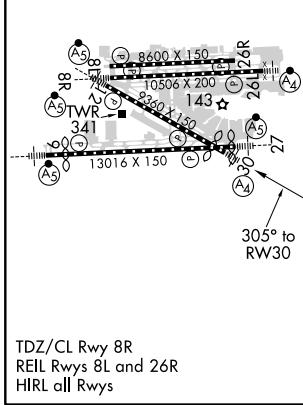
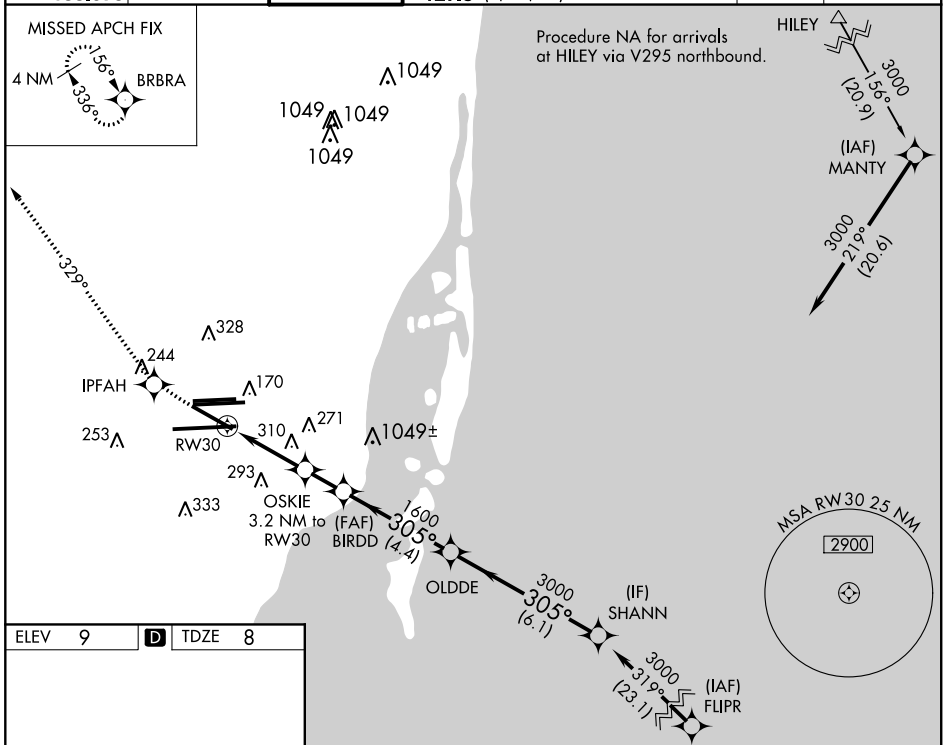
WAAS CH 40105 W30A	APP CRS 305°	Rwy Idg TDZE Apt Elev	7913 8 9
--	------------------------	-----------------------------	-------------------------------------

RNAV (GPS) Z RWY 30

MIAMI INTL (MIA)

Inoperative table does not apply to LNAV Cat C and D. DME/DME RNP-0.3 NA	MALS	MISSED APPROACH: Climb to 3000 direct IPFAH and via 329° track to BRBRA and hold.

D-ATIS ARR 119.15 DEP 133.675	MIAMI APP CON 124.85 322.3	MIAMI TOWER 118.3 256.9	121.8 (8L/8R/12/26L/26R) 127.5 (9/27/30)	GND CON 348.6	CLNC DEL 135.35	CPDLC
---	--------------------------------------	-----------------------------------	---	-------------------------	---------------------------	-------



ELEV 9	D	TDZE 8		
3000	IPFAH	BRBRA	VGSI and LPV glidepath not coincident (VGSI Angle 3.00/TCH 71).	Procedure Turn NA
↑		329° tr		
*LNAV only.				
	OSKIE 3.2 NM to RW30	BIRDD	OLDE	SHANN
	*1.5 NM to RW30		305°	305°
		*1080	3000	3000
	1.5 NM	1.7 NM	1.6 NM	4.4 NM
			6.1 NM	
GP 3.00°				TCH 51
CATEGORY	A	B	C	D
LPV DA	285/50 277 (300-1)			
LNAV MDA	560/40	552 (600-¾)	560-1½ 552 (600-1½)	560-1¾ 552 (600-1¾)

SE-3, 25 MAR 2021 to 22 APR 2021

SE-3, 25 MAR 2021 to 22 APR 2021