

MIAMI, FLORIDA

AL-257 (FAA)

19115

WAAS CH <b>40205</b> <b>W27A</b>	APP CRS <b>272°</b>	Rwy Idg <b>12755</b> TDZE <b>8</b> Apt Elev <b>9</b>
--	------------------------	--

# RNAV (GPS) Z RWY 27

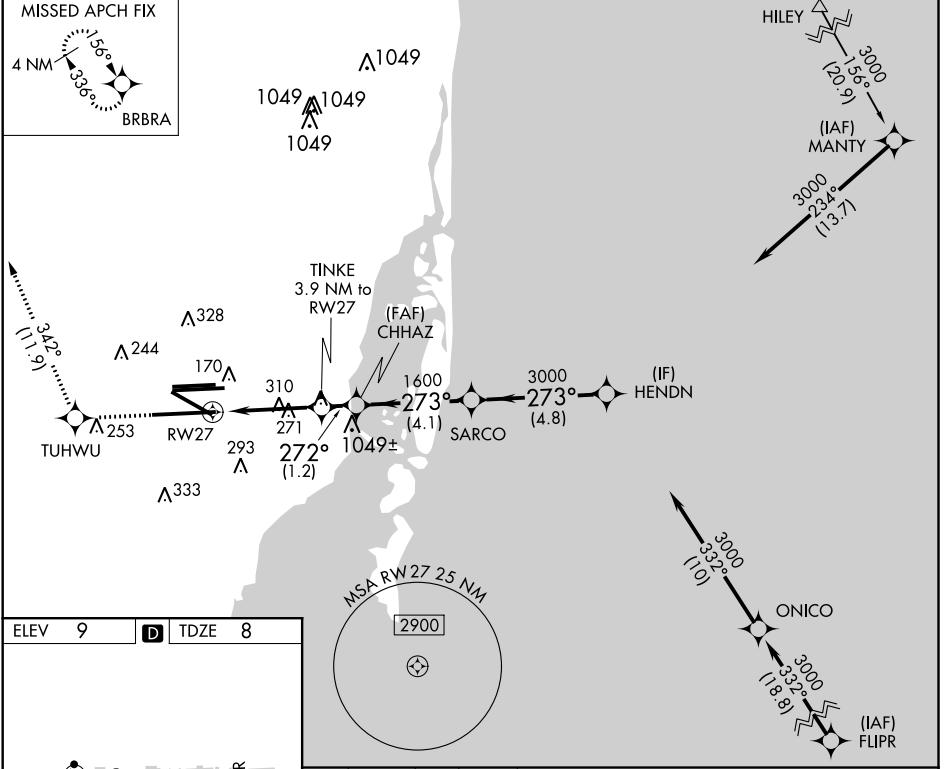
MIAMI INTL (MIA)

▼ For uncompensated Baro-VNAV systems, LNAV/VNAV NA below 6°C (43°F) or above 54°C (130°F). DME/DME RNP-0.3 NA. For inop MALSR, increase LPV Cat E visibility to RVR 4000, LNAV/VNAV all Cats visibility to 1½ mile, and LNAV Cat E visibility to 1¾ mile. \*\*RVR 1800 authorized with use of FD or AP or HUD to DA.

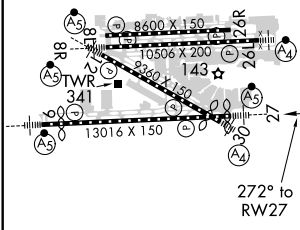


MISSED APPROACH:  
Climb to 2000 direct  
TUHWU and on track  
342° to BRBRA and hold.

D-ATIS ARR <b>119.15</b> DEP <b>133.675</b>	MIAMI APP CON <b>124.85 322.3</b>	MIAMI TOWER <b>118.3 256.9</b>	GND CON <b>121.8</b> (8L/8R/12/26L/26R) <b>127.5</b> (9/27/30)	<b>348.6</b>	CLNC DEL <b>135.35</b>	CPDLC
---	--------------------------------------	-----------------------------------	--	--------------	---------------------------	-------



ELEV 9	<b>D</b>	TDZE 8
--------	----------	--------



2000	TUHWU	tr	342°	BRBRA	VGS1 and RNAV glidepath not coincident (VGS1 Angle 3.00/TCH 71).	HENDN
*RNAV only.	TINKE	3.9 NM to RW27	1700	273°	3000	3000
*1.5 NM to RW27	*1300	1700	272° to RW27	1.5	2.4 NM	1.2 NM
4.1 NM	4.8 NM	GP 3.00° TCH 55				
CATEGORY	A	B	C	D	E	
LPV DA**	208/24					200 (200-½)
LNAV/VNAV DA	440/50					432 (500-1)
LNAV MDA	560/24	552 (600-½)	560/60	552 (600-1¼)		

TDZ/CL Rwy 8R  
REIL Rwy 8L and 26R  
HIRL all Rwy

MIAMI, FLORIDA  
Amdt 3A 17AUG17

25°48'N-80°17'W

# RNAV (GPS) Z RWY 27

MIAMI INTL (MIA)

SE-3, 25 MAR 2021 to 22 APR 2021

SE-3, 25 MAR 2021 to 22 APR 2021