

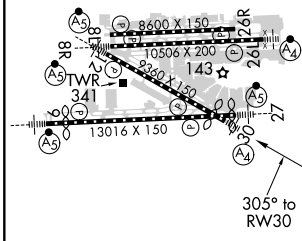
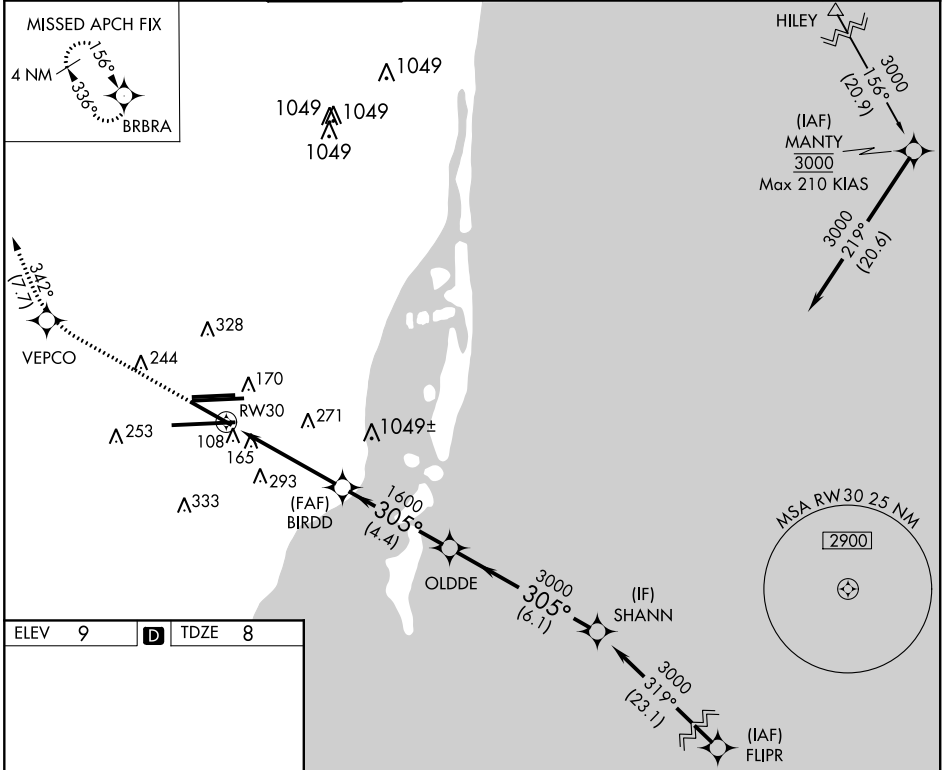
APP CRS	Rwy Idg	7913
305°	TDZE	8
	Apt Elev	9

RNAV (RNP) Y RWY 30

MIAMI INTL (MIA)

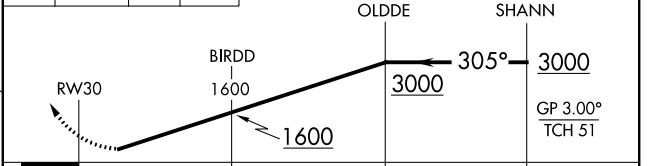
V NA	For inoperative MALS, increase RNP 0.23 all Cats visibility to 1½, RNP 0.30 all Cats to 1¾. GPS Required. For uncompensated Baro-VNAV systems, procedure NA below 6°C (42°F) or above 48°C (119°F).	MALS 	MISSED APPROACH: Climb to 3000 direct VEPCO and via 342° track to BRBRA and hold.
	(A4)		

D-ATIS	MIAMI APP CON	MIAMI TOWER	GND CON	CLNC DEL	CPDLC
ARR 119.15	124.85 322.3	118.3 256.9	121.8 (8L/8R/12/26L/26R)	348.6	
DEP 133.675			127.5 (9/27/30)	135.35	



ELEV	9	D	TDZE	8
TDZ/CL Rwy 8R REIL Rwy 8L and 26R HIRL all Rwy				

3000	VEPCO	342° tr	BRBRA	VGSI and RNAV glidepath not coincident (VGSI Angle 3.00/TCH 71).	Procedure Turn NA
------	-------	---------	-------	---	----------------------



CATEGORY	A	B	C	D
RNP 0.23 DA		426-1¼	418 (500-1¼)	
RNP 0.30 DA		521-1½	513 (600-1½)	

AUTHORIZATION REQUIRED

SE-3, 25 MAR 2021 to 22 APR 2021

SE-3, 25 MAR 2021 to 22 APR 2021