

APP CRS	Rwy Idg	10220
272°	TDZE	8
	Apt Elev	9

RNAV (RNP) Y RWY 26L

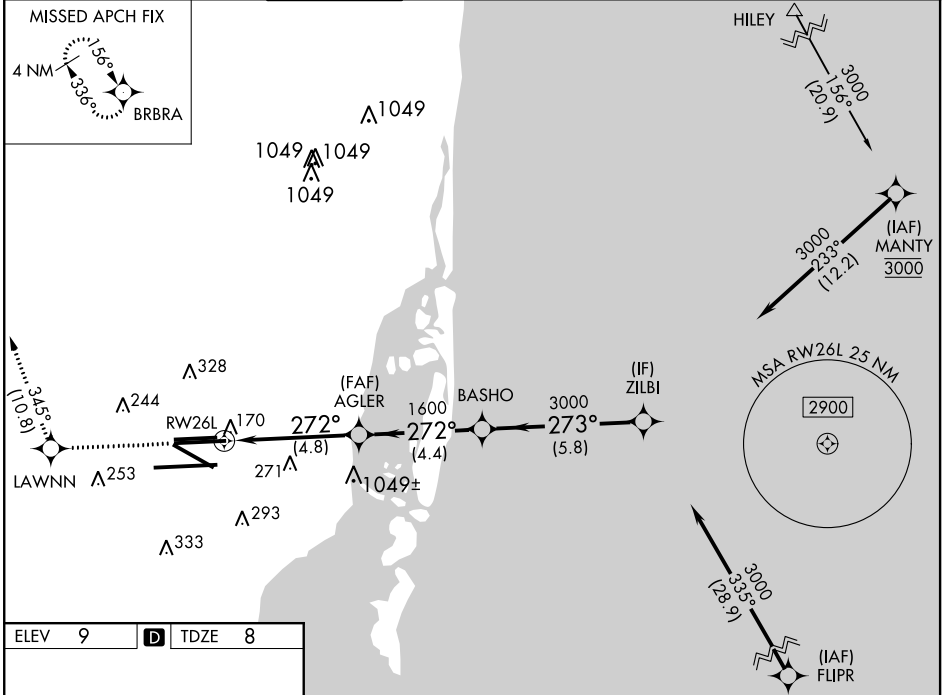
MIAMI INTL (MIA)

▼ For uncompensated Baro-VNAV systems, procedure NA below 6°C (43°F) or above 54°C (130°F). GPS Required. For inop MALSF, increase RNP 0.20 Cat D visibility to RVR 6000 and increase RNP 0.30 Cat D visibility to 1 3/4 mile.



MISSED APPROACH: Climb to 2000 direct LAWNN and on track 345° to BRBRA and hold.

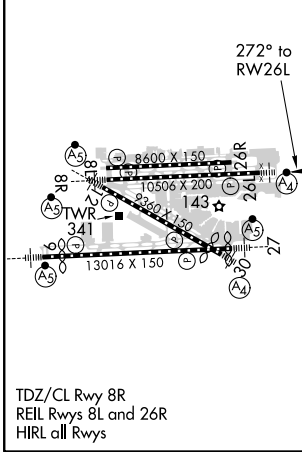
D-ATIS	MIAMI APP CON	MIAMI TOWER	GND CON	CLNC DEL	CPDLC
ARR 119.15	124.85 322.3	118.3 256.9	121.8 (8L/8R/12/26L/26R)	135.35	
DEP 133.675			127.5 (9/27/30)	348.6	



SE-3, 25 MAR 2021 to 22 APR 2021

SE-3, 25 MAR 2021 to 22 APR 2021

ELEV 9	D	TDZE 8
--------	----------	--------



2000	LAWNN	tr 345°	BRBRA	VGSI and RNAV glidepath not coincident (VGSI Angle 3.00/TCH 73).
				BASHO ZILBI
				AGLER 1600 272° 3000 273° 3000
				RW26L 1600 GP 3.00° TCH 58
	4.8 NM	4.4 NM	5.8 NM	
CATEGORY	A	B	C	D
RNP 0.20 DA		370/45	362 (400-1)	
RNP 0.30 DA		420/60	412 (500-1 1/4)	
AUTHORIZATION REQUIRED				