

(JONZI2.JONZI) 18088

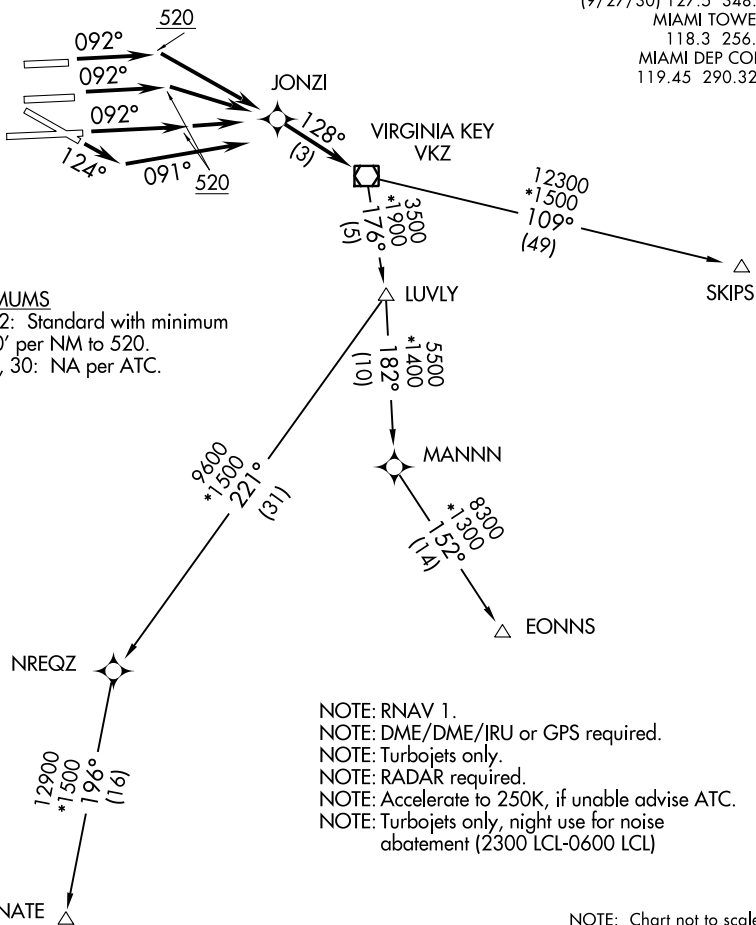
AL-257 (FAA)

MIAMI INTL (MIA)  
MIAMI, FLORIDA

# JONZI TWO DEPARTURE (RNAV)

**TOP ALTITUDE:**  
**5000**

D-ATIS 133.675  
CLNC DEL 135.35  
CPDLC  
GND CON  
(Rwys 8L/8R/12/26L/26R) 121.8 348.6  
(9/27/30) 127.5 348.6  
MIAMI TOWER  
118.3 256.9  
MIAMI DEP CON  
119.45 290.325



### TAKEOFF MINIMUMS

Rwys 8L/R, 9, 12: Standard with minimum climb of 500' per NM to 520.  
Rwys 26L/R, 27, 30: NA per ATC.

- NOTE: RNAV 1.
- NOTE: DME/DME/IRU or GPS required.
- NOTE: Turbojets only.
- NOTE: RADAR required.
- NOTE: Accelerate to 250K, if unable advise ATC.
- NOTE: Turbojets only, night use for noise abatement (2300 LCL-0600 LCL)

NOTE: Chart not to scale.

### DEPARTURE ROUTE DESCRIPTION

**TAKEOFF RUNWAYS 8L/R, 9:** Climb heading 092° to 520, then direct JONZI, then on depicted route to VKZ VOR/DME. Thence. . .

**TAKEOFF RUNWAY 12:** Climb heading 124° to intercept course 091° to JONZI, then on depicted route to VKZ VOR/DME. Thence. . .

. . . via transition or assigned route, maintain 5000 or ATC assigned altitude. Expect further clearance to filed altitude within 10 minutes after departure.

- EONNS TRANSITION (JONZI2.EONNS):
- MNATE TRANSITION (JONZI2.MNATE):
- SKIPS TRANSITION (JONZI2.SKIPS):

**JONZI TWO DEPARTURE (RNAV)**  
(JONZI2.JONZI) 30APR15

MIAMI, FLORIDA  
MIAMI INTL (MIA)

SE-3, 25 MAR 2021 to 22 APR 2021

SE-3, 25 MAR 2021 to 22 APR 2021