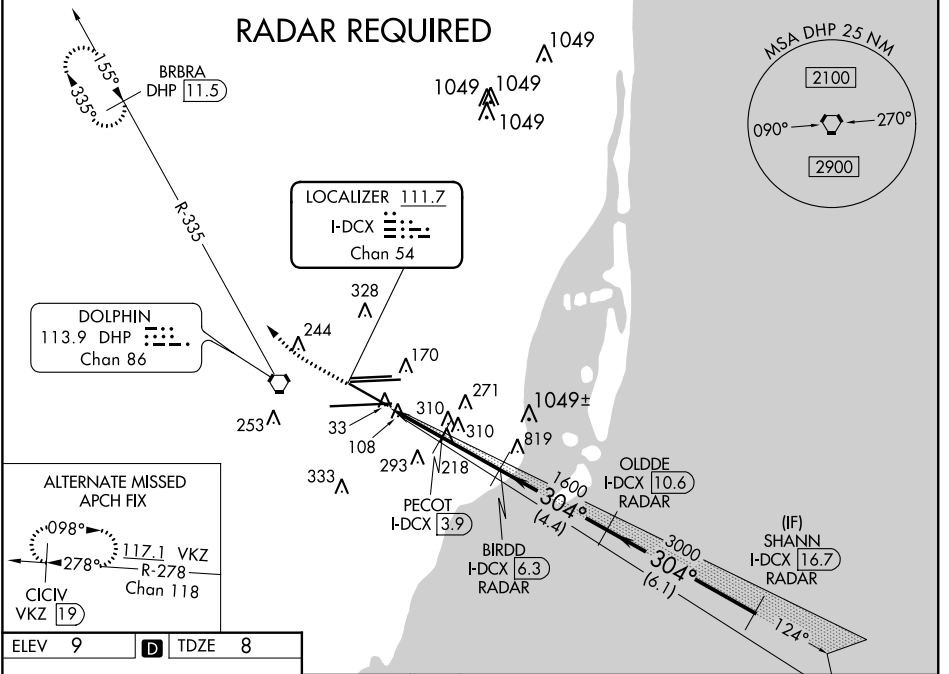


LOC/DME I-DCX <b>111.7</b> Chan <b>54</b>	APP CRS <b>304°</b>	Rwy Idg TDZE Apt Elev	<b>7913</b> <b>8</b> <b>9</b>
---	------------------------	-----------------------------	-------------------------------------

# ILS or LOC RWY 30

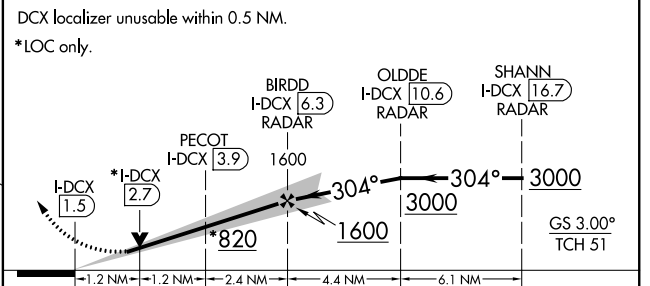
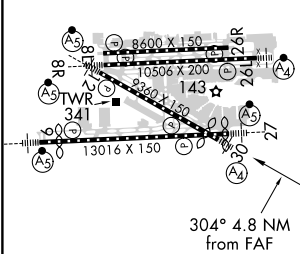
MIAMI INTL (MIA)

D-ATIS ARR <b>119.15</b> DEP <b>133.675</b>		MIAMI APP CON <b>124.85 322.3</b>	MIAMI TOWER <b>118.3 256.9</b>	GND CON <b>121.8</b> (8L/8R/12/26L/26R) <b>127.5</b> (9/27/30)	CLNC DEL <b>348.6</b>	CPDLC
DME required. Inop table does not apply.				MALS 	MISSED APPROACH: Climb to 800 then climbing right turn to 2000 on heading 310° and DHP VORTAC R-335 to BRBRA/11.5 DME and hold.	



ELEV 9	<b>D</b>	TDZE 8
--------	----------	--------

800	2000	DHP R-335	BRBRA DHP 11.5	VGSI and ILS glidepath not coincident (VGSI Angle 3.00/TCH 71).
-----	------	-----------	----------------	---



FAF to MAP 4.8 NM					
Knots	60	90	120	150	180
Min:Sec	4:48	3:12	2:24	1:55	1:36
CATEGORY	A		B		D
S-ILS 30	258/40		250 (300-¾)		
S-LOC 30	460/40		452 (500-¾)	460/60	460-1½
			452 (500-1¼)	452 (500-1½)	

SE-3, 25 MAR 2021 to 22 APR 2021

SE-3, 25 MAR 2021 to 22 APR 2021