

LOC I-MIA	APP CRS	Rwy Idg	12755
109.5	272°	TDZE	8
		Apt Elev	9

ILS or LOC RWY 27

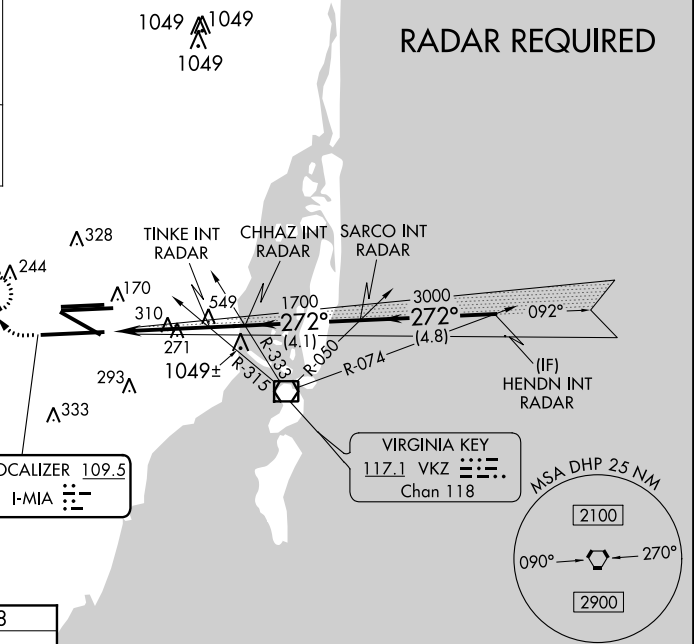
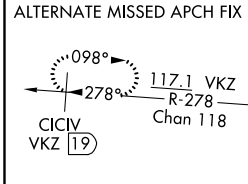
MIAMI INTL (MIA)

Simultaneous approach authorized.
 For inop ALS, increase S-ILS 27 Cat E visibility to RVR 4000 and TINKE Fix Minimums S-LOC 27 Cat E visibility to 1 $\frac{1}{2}$ SM.
 Inop table does not apply to S-LOC 27 Cats C/D/E.
 **RVR 1800 authorized with use of FD or AP or HUD to DA.

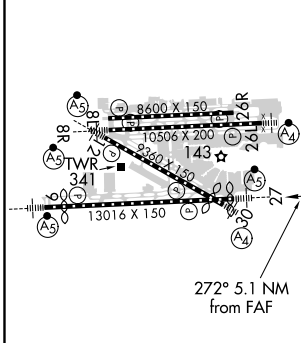
MALSR

MISSED APPROACH: Climb to 600 then climbing right turn to 3000 direct DHP VORTAC and hold, continue climb-in-hold to 3000.

D-ATIS	MIAMI APP CON	MIAMI TOWER	GND CON	CLNC DEL	CPDLC
ARR DEP	119.15 133.675	124.85 322.3	118.3 256.9	121.8 (8L/8R/12/26L/26R) 127.5 (9/27/30) 348.6	135.35



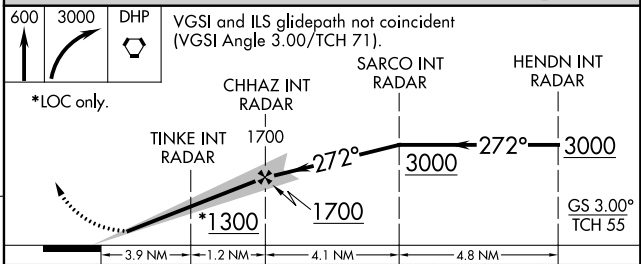
ELEV	9	D	TDZE	8
------	---	---	------	---



TDZ/CL Rwy 8R
 REIL Rwys 8L and 26R
 HIRL all Rwys

FAF to MAP 5.1 NM

Knots	60	90	120	150	180
Min:Sec	5:06	3:24	2:33	2:02	1:42



CATEGORY	A	B	C	D	E
S-ILS 27**	208/24 200 (200- $\frac{1}{2}$)				
S-LOC 27	1300/40 1292 (1300- $\frac{3}{4}$)	1300/55 1292 (1300-1)	1300-3	1292 (1300-3)	
TINKE FIX MINIMUMS					
S-LOC 27	560/24	552 (600- $\frac{1}{2}$)	560/60	552 (600- $\frac{1}{4}$)	

SE-3, 25 MAR 2021 to 22 APR 2021

SE-3, 25 MAR 2021 to 22 APR 2021