

LOC/DME I-VIN <b>109.1</b> Chan 28	APP CRS <b>272°</b>	Rwy Idg <b>10220</b> TDZE <b>9</b> Apt Elev <b>9</b>
--	------------------------	--

# ILS or LOC RWY 26L

MIAMI INTL (MIA)

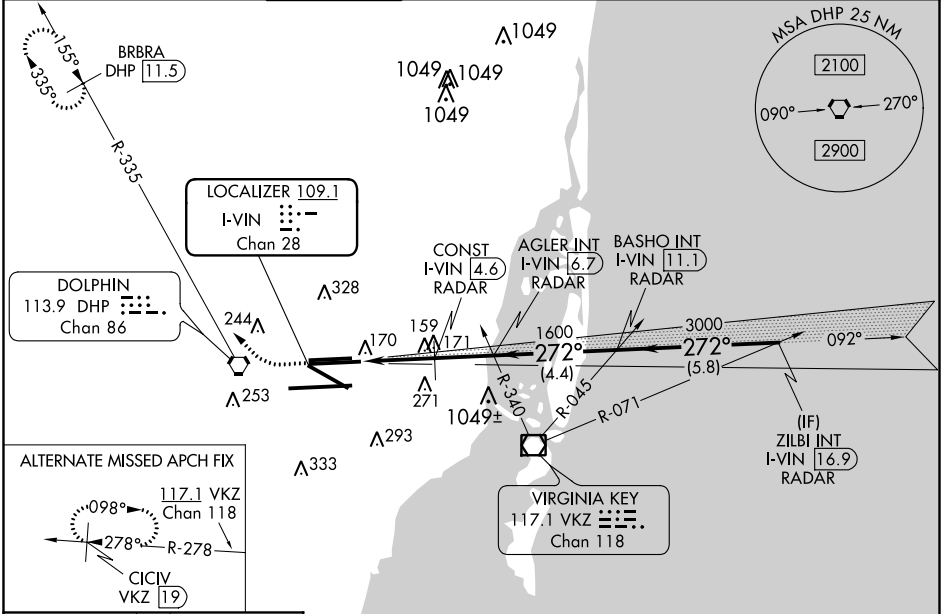
DME required. RADAR required for procedure entry.

Autopilot coupled approach NA below 480. Simultaneous approach authorized. Inop table does not apply to S-ILS 26L all Cats and S-LOC 26L Cat C/D. For inop ALS, increase CONST FIX MINIMUMS: S-LOC 26L Cat C/D visibility to RVR 6000.

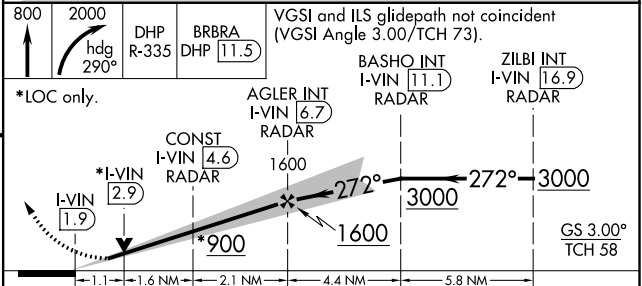
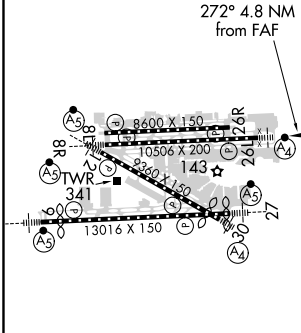
MALSF

MISSED APPROACH: Climb to 800 then climbing right turn to 2000 on heading 290° and DHP VORTAC R-335 to BRBRA/DHP 11.5 DME and hold.

D-ATIS ARR <b>119.15</b> DEP <b>133.675</b>	MIAMI APP CON <b>124.85 322.3</b>	MIAMI TOWER <b>118.3 256.9</b>	GND CON <b>121.8</b> (8L/8R/12/26L/26R) <b>127.5</b> (9/27/30)	<b>348.6</b>	CLNC DEL <b>135.35</b>	CPDLC
---	--------------------------------------	-----------------------------------	--	--------------	---------------------------	-------



ELEV 9	<b>D</b>	TDZE 9
--------	----------	--------



CATEGORY	A	B	C	D
S-ILS 26L	209/40 200 (200-¾)			
S-LOC 26L	900/55	891 (900-1)	900-2½	891 (900-2½)
CONST FIX MINIMUMS				
S-LOC 26L	420/40	411 (500-¾)	420/50	411 (500-1)

TDZ/CL Rwy 8R  
REIL Rwys 8L and 26R  
HIRL all Rwys

FAF to MAP 4.8 NM

Knots	60	90	120	150	180
Min:Sec	4:48	3:12	2:24	1:55	1:36

SE-3, 25 MAR 2021 to 22 APR 2021

SE-3, 25 MAR 2021 to 22 APR 2021