

# HITAG TWO DEPARTURE (RNAV)

SE-3, 25 MAR 2021 to 22 APR 2021

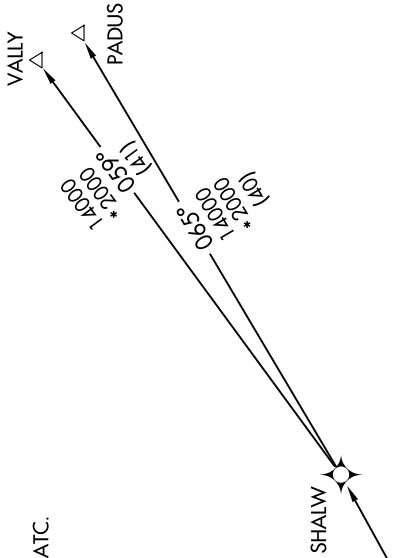
D-ATIS 133.675  
 CLNC DEL 135.35  
 CPDIC  
 GND CON  
 (Rwys 8L/8R/12/26L/26R)  
 121.8 348.6  
 (Rwys 9/27/30)  
 127.5 348.6  
 MIAMI TOWER  
 118.3 256.9  
 MIAMI DEP CON  
 119.45 290.325

**TOP ALTITUDE:  
5000**

**TAKEOFF MINIMUMS:**

Rwys 26L/R, 27, 30: NA per ATC.  
 Rwys 8L/R, 9, 12: Standard with  
 minimum climb of 500' per NM to 520.

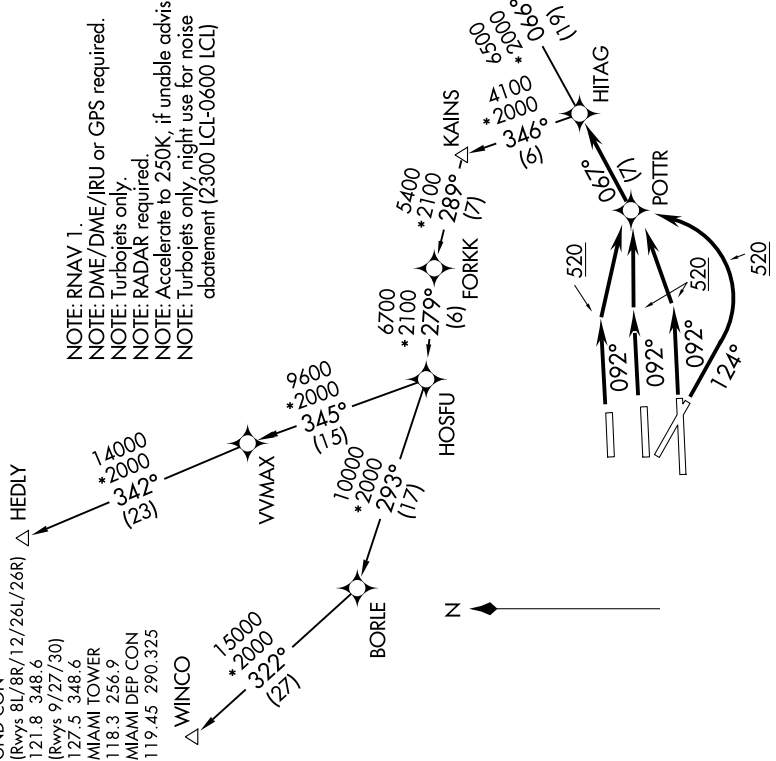
- NOTE: RNAV 1.
- NOTE: DME/DME/IRU or GPS required.
- NOTE: Turbojets only.
- NOTE: RADAR required.
- NOTE: Accelerate to 250K, if unable advise ATC.
- NOTE: Turbojets only, night use for noise abatement (2300 LCL-0600 LCI)



**DEPARTURE ROUTE DESCRIPTION**

TAKEOFF RUNWAYS 8L/R, 9: Climb heading 092° to 520, then direct POTTR, then on depicted route to HITAG. Thence, . . .  
 TAKEOFF RUNWAY 12: Climb heading 124° to 520, then turn left direct POTTR, then on depicted route to HITAG. Thence, . . .  
 . . . Via transition or assigned route, maintain 5000 or as assigned by ATC, expect climb to filed altitude/flight level within 10 minutes after departure.

- HEDLY TRANSITION (HITAG2.HEDLY);
- PADUS TRANSITION (HITAG2.PADUS);
- VALLY TRANSITION (HITAG2.VALLY);
- WINCO TRANSITION (HITAG2.WINCO);



NOTE: Chart not to scale.

SE-3, 25 MAR 2021 to 22 APR 2021

# HITAG TWO DEPARTURE (RNAV) (HITAG2.HITAG) 30APR15