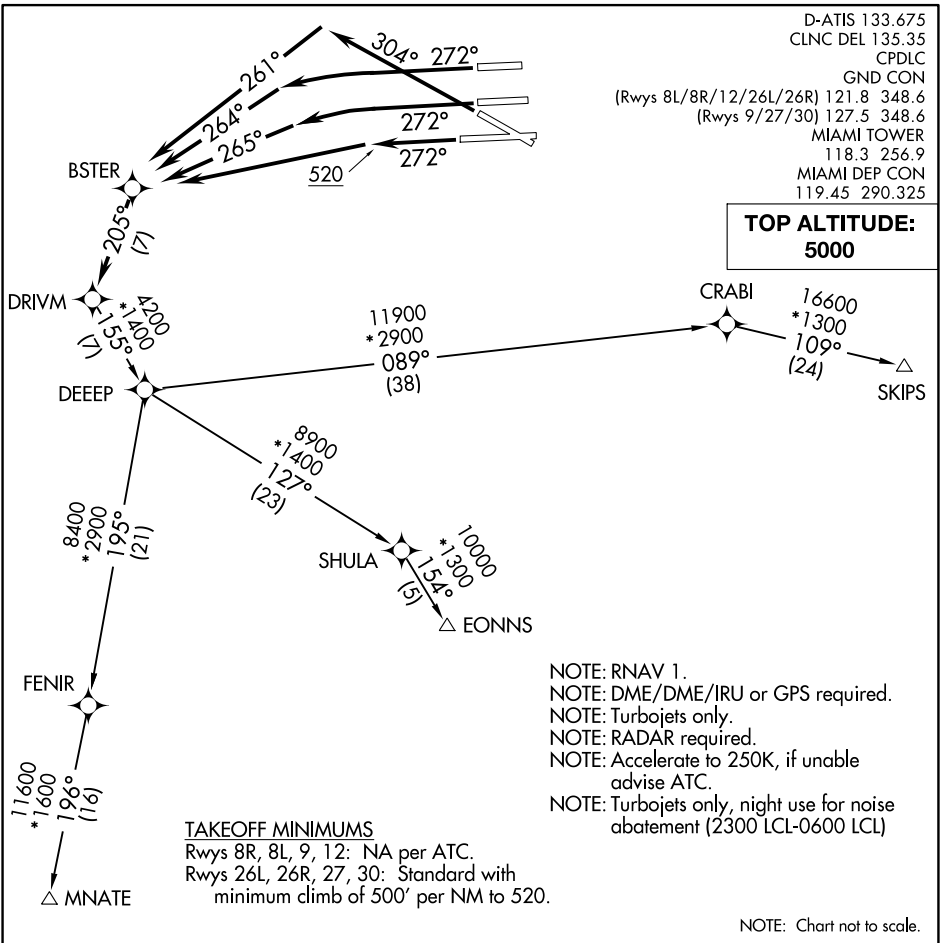


DEEEP TWO DEPARTURE (RNAV)



SE-3, 25 MAR 2021 to 22 APR 2021

SE-3, 25 MAR 2021 to 22 APR 2021

DEPARTURE ROUTE DESCRIPTION

TAKEOFF RUNWAY 26L: Climb heading 272° to intercept course 265° to BSTER, then on depicted route to DRIVM, thence. . . .

TAKEOFF RUNWAY 26R: Climb heading 272° to intercept course 264° to BSTER, then on depicted route to DRIVM, thence. . . .

TAKEOFF RUNWAY 27: Climb heading 272° to 520, then direct BSTER, then on depicted route to DRIVM, thence. . . .

TAKEOFF RUNWAY 30: Climb heading 304° to intercept course 261° to BSTER, then on depicted route to DRIVM, thence. . . .

....via transition or assigned route, maintain 5000 or ATC assigned altitude. Expect further clearance to filed altitude within 10 minutes after departure.

- EONNS TRANSITION (DEEEP2.EONNS):
- MNATE TRANSITION (DEEEP2.MNATE):
- SKIPS TRANSITION (DEEEP2.SKIPS):

NOTE: Chart not to scale.

DEEEP TWO DEPARTURE (RNAV)