

LOC I-MCN 109.5	APP CRS 054°	Rwy Idg TDZE Apt Elev	6221 344 354
---------------------------	------------------------	-----------------------------	---

ILS RWY 5 (SA CAT I & II)

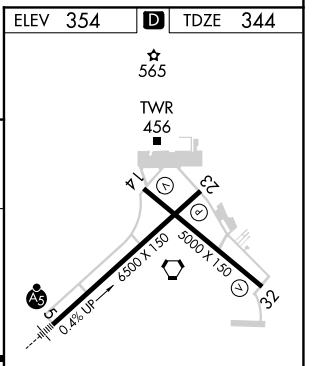
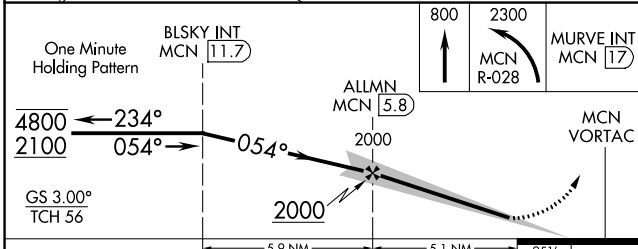
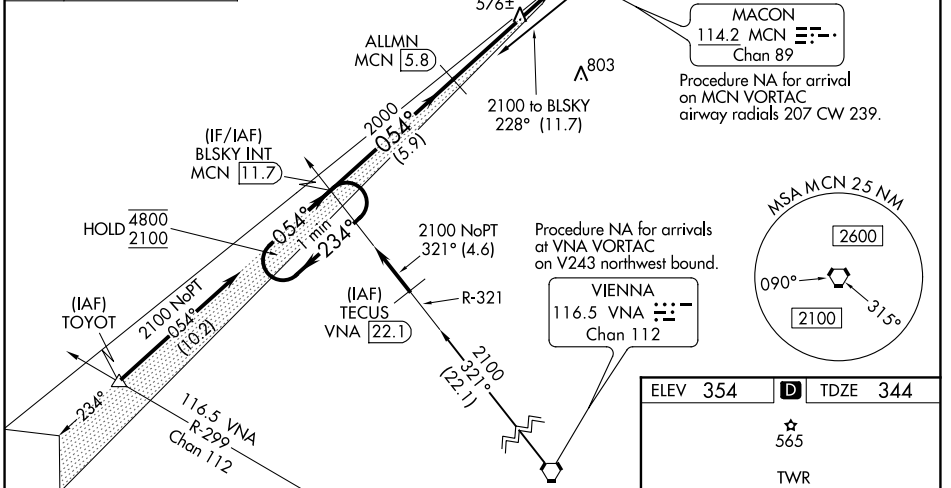
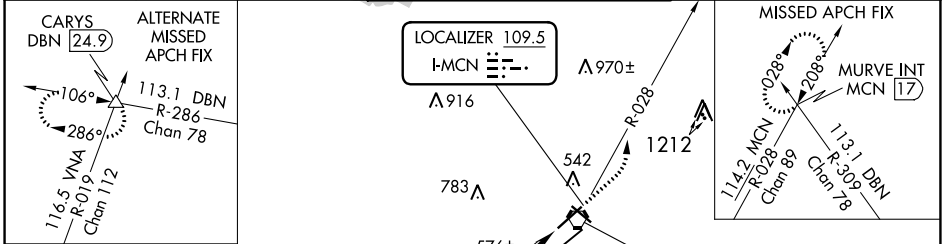
MIDDLE GEORGIA RGNL (MCN)

DME required.

▽ DME from MCN VORTAC. Simultaneous reception of I-MCN and MCN DME required.
▲ SA CAT I: Requires specific OPSPEC, MSPEC, or LOA approval and use of HUD to DH.
 SA CAT II: Reduced lighting: Requires specific OPSPEC, MSPEC, or LOA approval and use of autoland or HUD to touchdown. SA CAT I/II: Procedure NA when tower closed.

MALS R MISSED APPROACH FIX
 Climb to 800 then climbing left turn to 2300 on MCN VORTAC R-028 to MURVE INT/MCN 17 DME and hold.

ATIS 120.775	ATLANTA APP CON * 124.2 279.6	MACON TOWER * 128.2 (CTAF) 257.8	GND CON 121.65	UNICOM 122.95
------------------------	---	--	--------------------------	-------------------------



CATEGORY	A	B	C	D
S-ILS 5	SA CAT I	RA 216/14	150 DA 494	
S-ILS 5	SA CAT II	RA 151/12	100 DA 444	

HIRL Rwy 5-23

MIRL Rwy 14-32

REIL Rwy 23 and 32

SA CATEGORY I & II ILS - SPECIAL AIRCREW & AIRCRAFT CERTIFICATION REQUIRED

SE-4, 25 MAR 2021 to 22 APR 2021

SE-4, 25 MAR 2021 to 22 APR 2021