

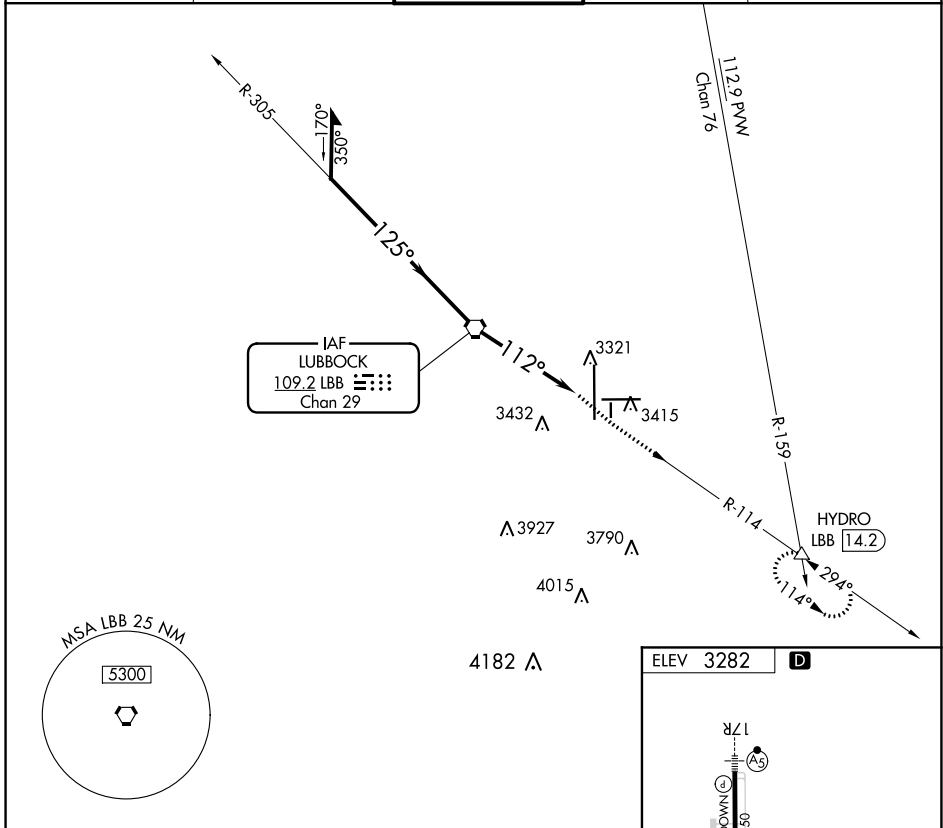
VORTAC LBB <b>109.2</b> Chan 29	APP CRS <b>112°</b>	Rwy Idg TDZE Apt Elev <b>N/A</b> <b>N/A</b> <b>3282</b>
---------------------------------------	------------------------	--

**VOR-A**

LUBBOCK PRESTON SMITH INTL (LBB)

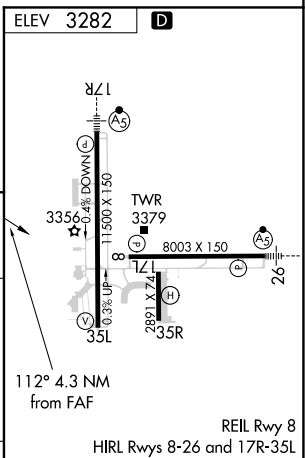
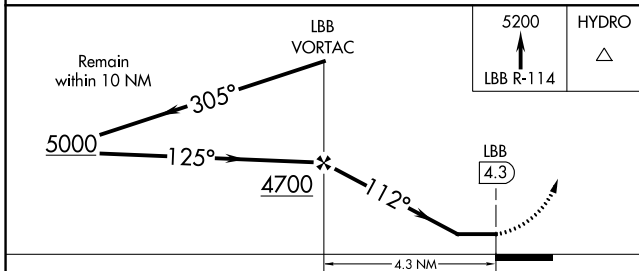
<p><b>ATIS</b> <b>125.3 270.275</b></p>		<p><b>LUBBOCK APP CON</b> <b>119.2 351.8</b></p>		<p><b>LUBBOCK TOWER</b> <b>120.5 239.3</b></p>		<p><b>GND CON</b> <b>121.9 348.6</b></p>		<p><b>CLNC DEL</b> <b>125.8 281.55</b></p>	
---	--	--	--	--	--	--	--	--	--

MISSED APPROACH: Climb to 5200 via LBB R-114 to HYDRO INT and hold.



SC-2, 25 MAR 2021 to 22 APR 2021

SC-2, 25 MAR 2021 to 22 APR 2021



CATEGORY	A	B	C	D	FAF to MAP 4.3 NM					
CIRCLING	3720-1 438 (500-1)	3740-1 458 (500-1)	3880-1½ 598 (600-1½)	3940-2 658 (700-2)	Knots	60	90	120	150	180
					Min:Sec	4:18	2:52	2:09	1:43	1:26