

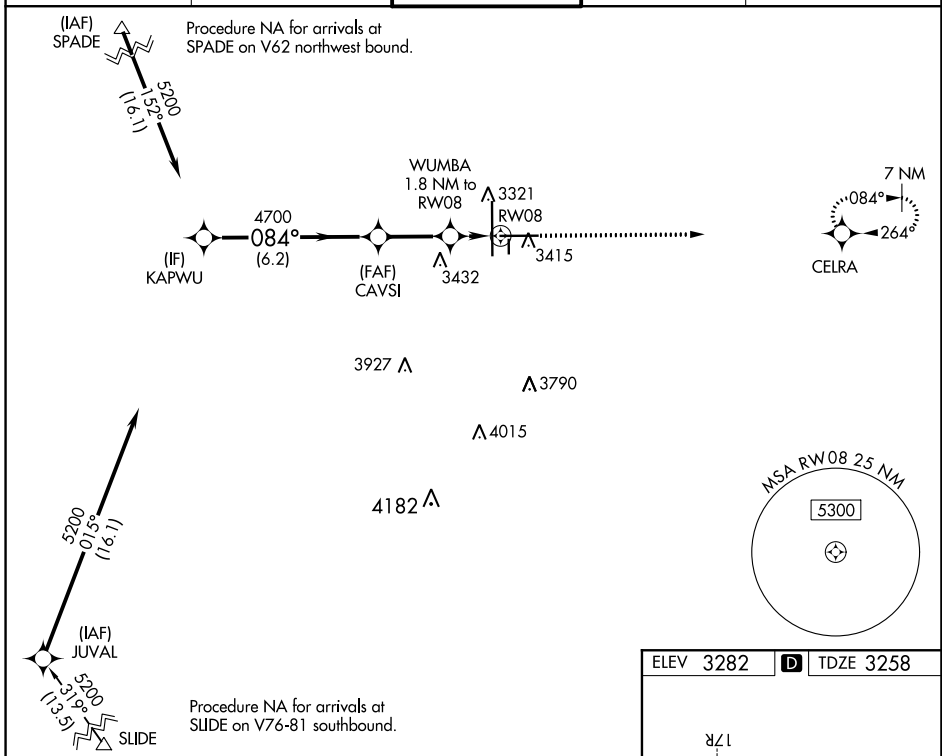
WAAS CH 97327 W08A	APP CRS 084°	Rwy Idg TDZE Apt Elev	8003 3258 3282
--	------------------------	-----------------------------	---

RNAV (GPS) RWY 8

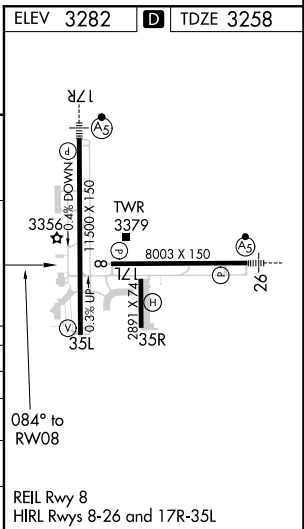
LUBBOCK PRESTON SMITH INTL (L.B.B)

RNP APCH.	For uncompensated Baro-VNAV systems, LNAV/VNAV NA below -10°C or above 52°C.	MISSED APPROACH: Climb to 5000 direct CELRA and hold.
-----------	--	---

ATIS 125.3 270.275	LUBBOCK APP CON 119.2 351.8	LUBBOCK TOWER 120.5 239.3	GND CON 121.9 348.6	CLNC DEL 125.8 281.55
------------------------------	---------------------------------------	-------------------------------------	-------------------------------	---------------------------------



KAPWU	5200				5000	CELRA
GP 3.00° TCH 50	084°				*LNAV only.	
	6.2 NM	2.6 NM	0.8 NM	1 NM		
CATEGORY	A	B	C	D	E	
LPV DA	3458- ³ / ₄		200 (200- ³ / ₄)			
LNAV/VNAV DA	3544- ⁷ / ₈		286 (300- ⁷ / ₈)			
LNAV MDA	3640-1	382 (400-1)	3640- ¹ / ₈	382 (400- ¹ / ₈)		
CIRCLING	3720-1 438 (500-1)	3740-1 458 (500-1)	3880- ¹ / ₂ 598 (600- ¹ / ₂)	3940-2 658 (700-2)	4100-3 818 (900-3)	



SC-2, 25 MAR 2021 to 22 APR 2021

SC-2, 25 MAR 2021 to 22 APR 2021